



SUMMER LEARNING





Welcome



Introductions

What are you hoping to get out of today's presentation?

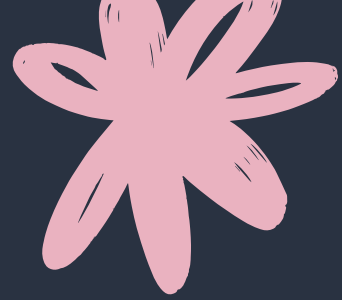


summer programming for rural communities

For Today:

- Why students don't participate in summer programs.
- Intentional summer programming
 - Unique summer names
 - Rural Schools in Nebraska
 - Examples of local partners
 - Sustainability





Summer Program Barriers

- *Financial Constraints
- *Not aware of Program
- *Transportation Issue
- *Family Responsibilities
- *Limited availability of programs
- *Students not having adequate support

- *Language Barriers
- *Disconnected to Program
- *Cultural Backgrounds



Intentional summer programming

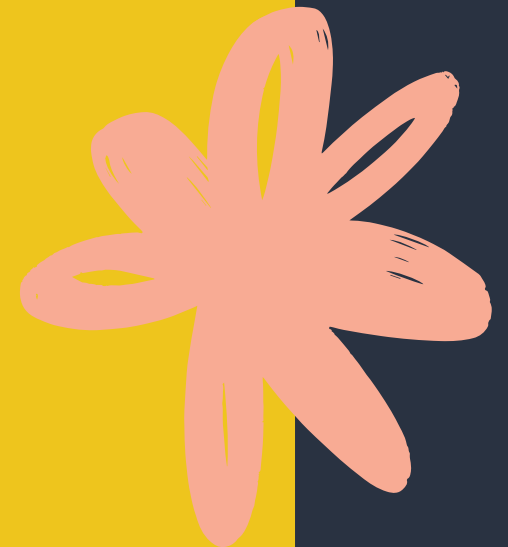
- Aligns with Student Interests
- No cost or Low-cost Options
- Provides Enrichment Opportunities
- Fosters Academic Growth
- Supports Social-emotional growth
- Offers flexible schedule
- Involves Family and Community
- Provides training for staff

Summer Toolkit

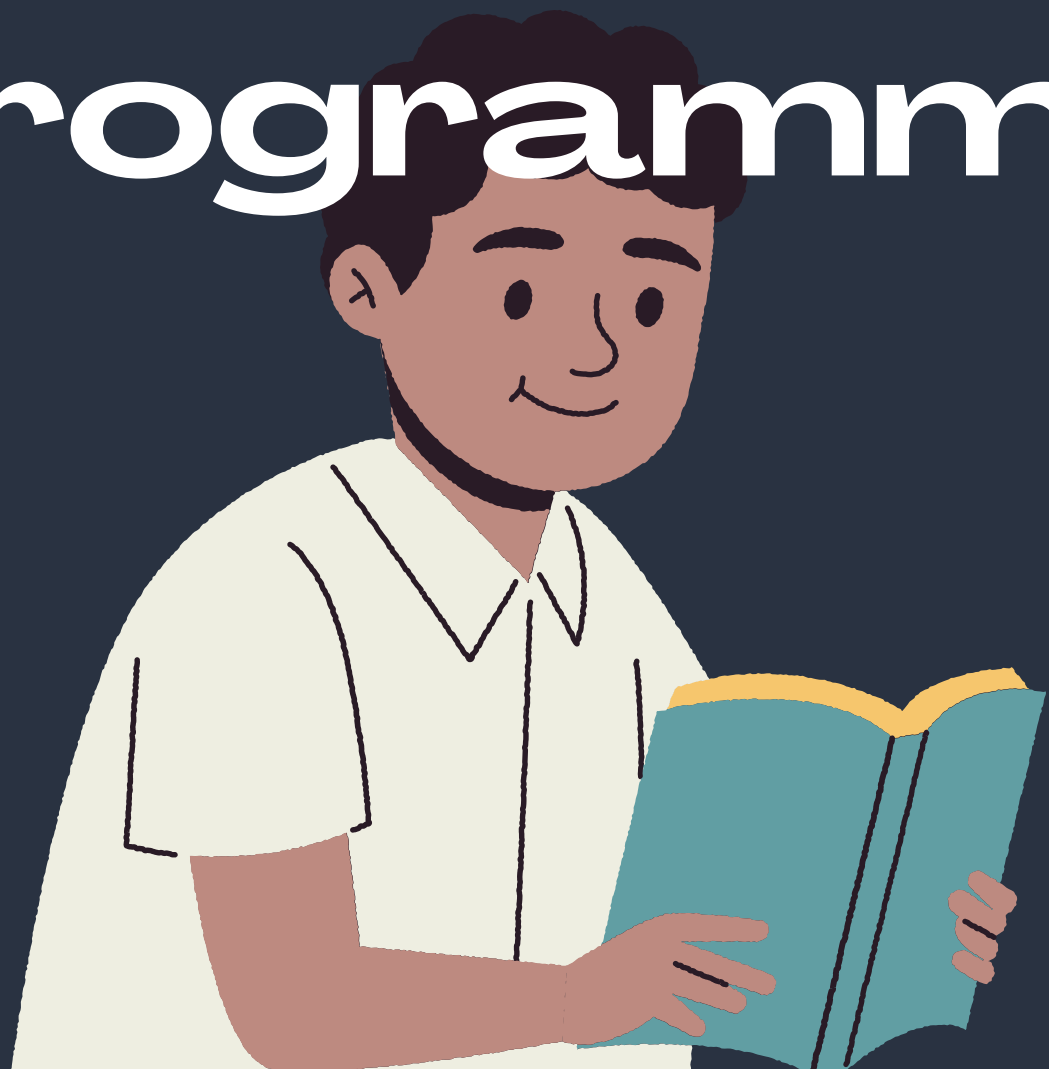


The Wallace Foundation:

[https://wallacefoundation.org/toolkit/summer-learning-toolkit?
utm_source=sendinblue&utm_campaign=Summer%20Planning%2
02022%20Webinar%20Announcement&utm_medium=email](https://wallacefoundation.org/toolkit/summer-learning-toolkit?utm_source=sendinblue&utm_campaign=Summer%20Planning%202022%20Webinar%20Announcement&utm_medium=email)



Intentional summer programming



- Aligns with Student Interests
- No cost or Low-cost Options
- Provides Enrichment Opportunities
- Fosters Academic Growth
- Supports Social-emotional growth
- Offers flexible schedule
- Involves Family and Community
- Provides training for staff



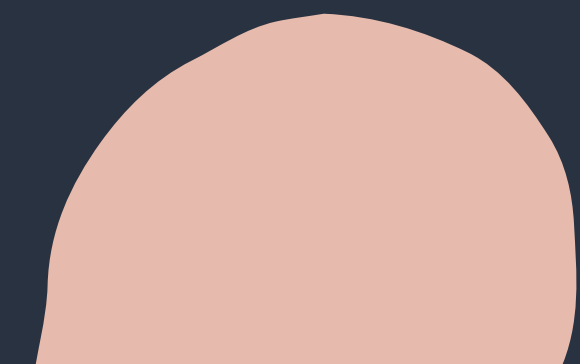
Instead of Summer School

Choose your Adventure
Beyond Boundaries
Elevate Summer
Summer Adventures
-
Limitless Summer
Endless Summer Adventures
The Great Summer Escape
Golden Days Camp
Adventure Awaits
Summer Academy





Video



Rural Schools

According to the Nebraska Rural Community Schools Association (NRCSA), over 88,000 students in Nebraska are enrolled in rural school systems.

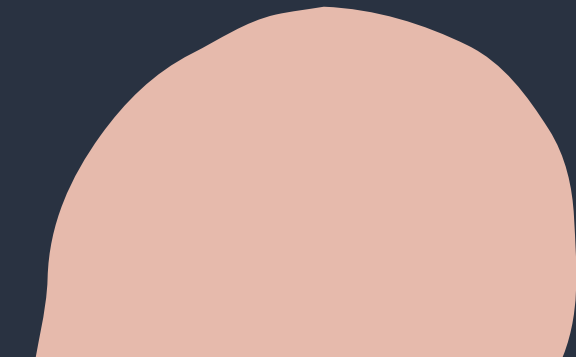
Data from National Center for Research on Rural Education, which indicates that nearly 30% of Nebraska's student population attends rural schools.



Local Partners



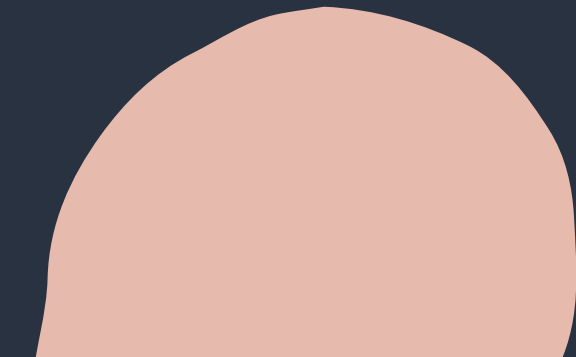
Local Farmers
Farm Bureau
Local Co Op
Natural Resource District (NRD)
City Office
Recycling Centers/Keep Nebraska Affiliates
Nebraska Forestry
Nebraska Conservation
AmeriCorps
Local Historical Society
Senior Citizens
Sewing Guild



Local Partners



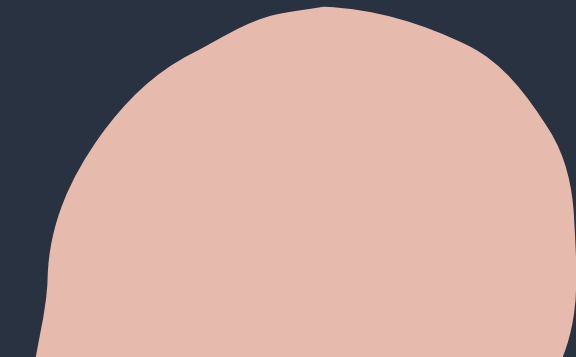
Artists
Extension/4-H Program
Public Libraries
Boys Scouts
Girl Scouts
YMCA
Chamber of Commerce
Domestic Violence Shelters
Mental Health Centers (Regional Behavioral Centers)



Local Partners



Firefighters
Police Department
Hospital
Community Foundation
Beekeepers
Master Gardeners
Banks-Financial Education
University or Community College-STEM Projects, student-volunteers
Food Pantries-provides snacks or meals
Business-career talks/worksite field trips



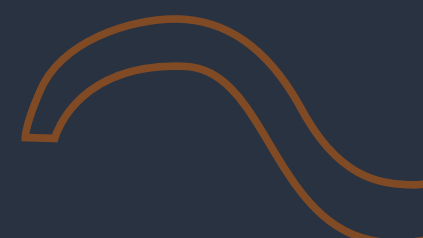



Discussion



What other organizations or businesses support your summer program?

Which organization would you like to invite to be part of your summer program?



Sustainability

- Possible partners into the school year
- Commitment to supporting the program
- ongoing match resources, funding, grant opportunities or other support





Questions
?