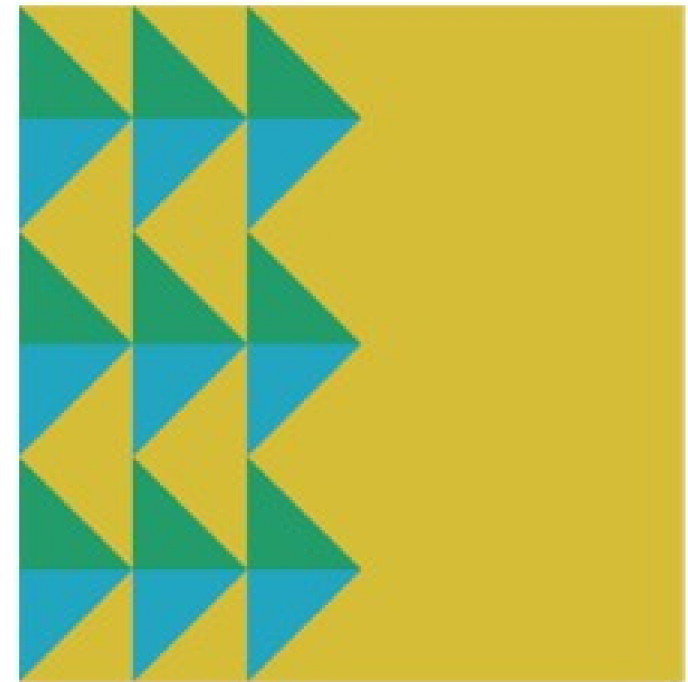
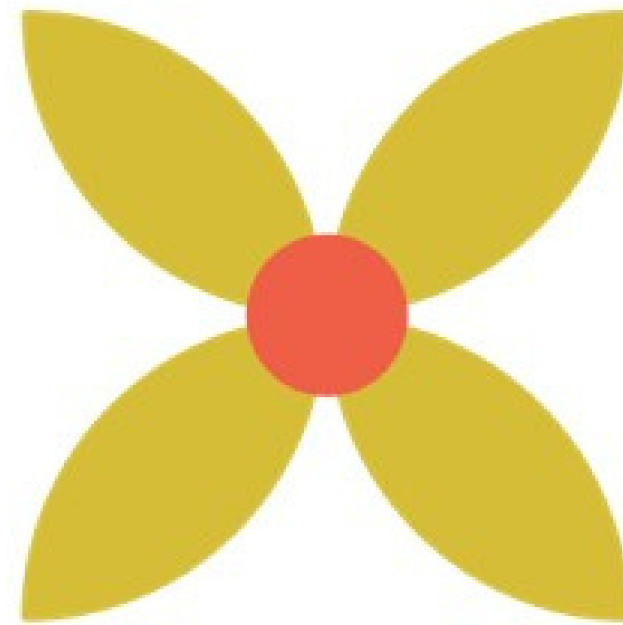


nebraska
children
AND FAMILIES FOUNDATION



What communities are represented today?

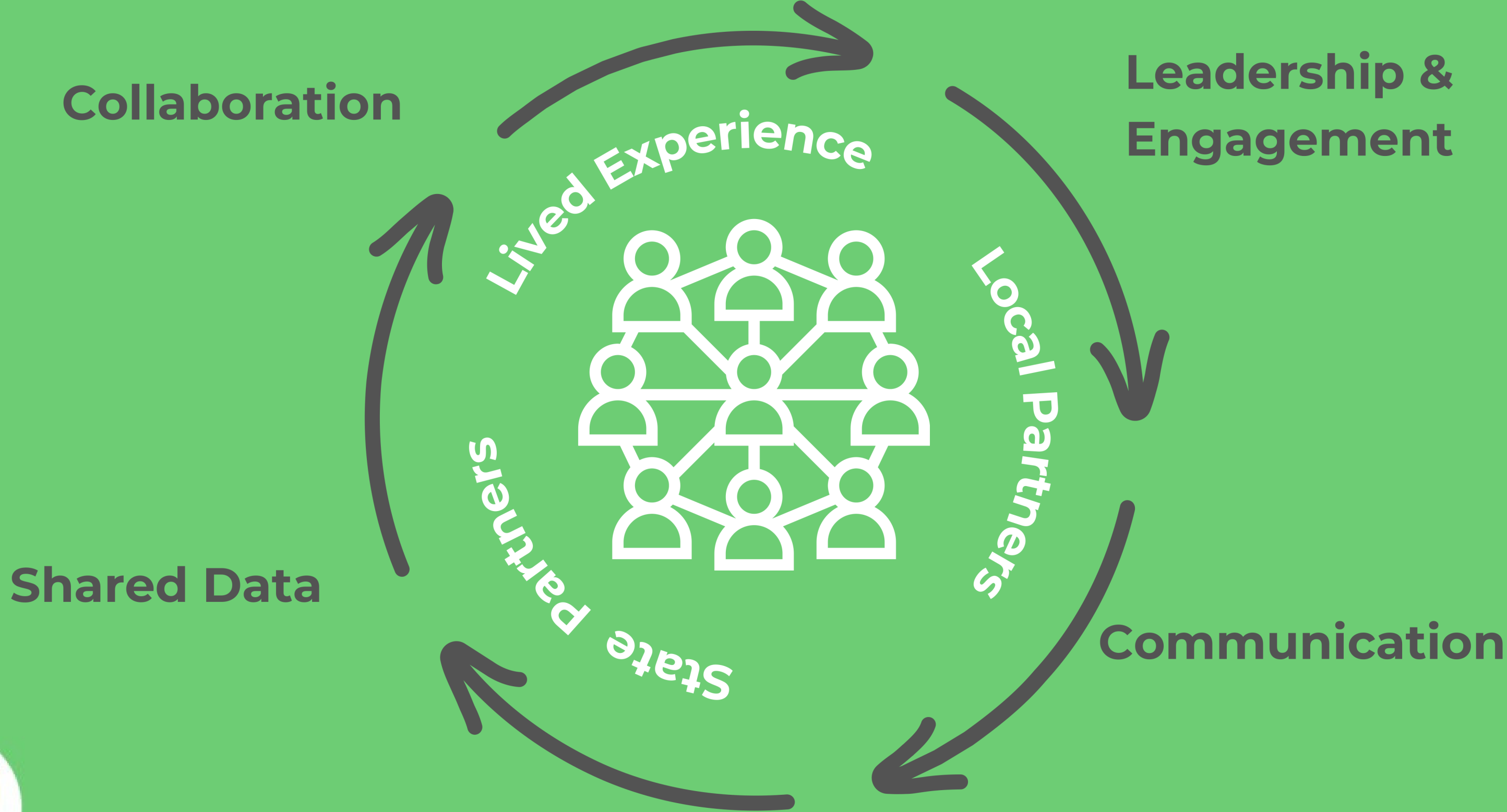


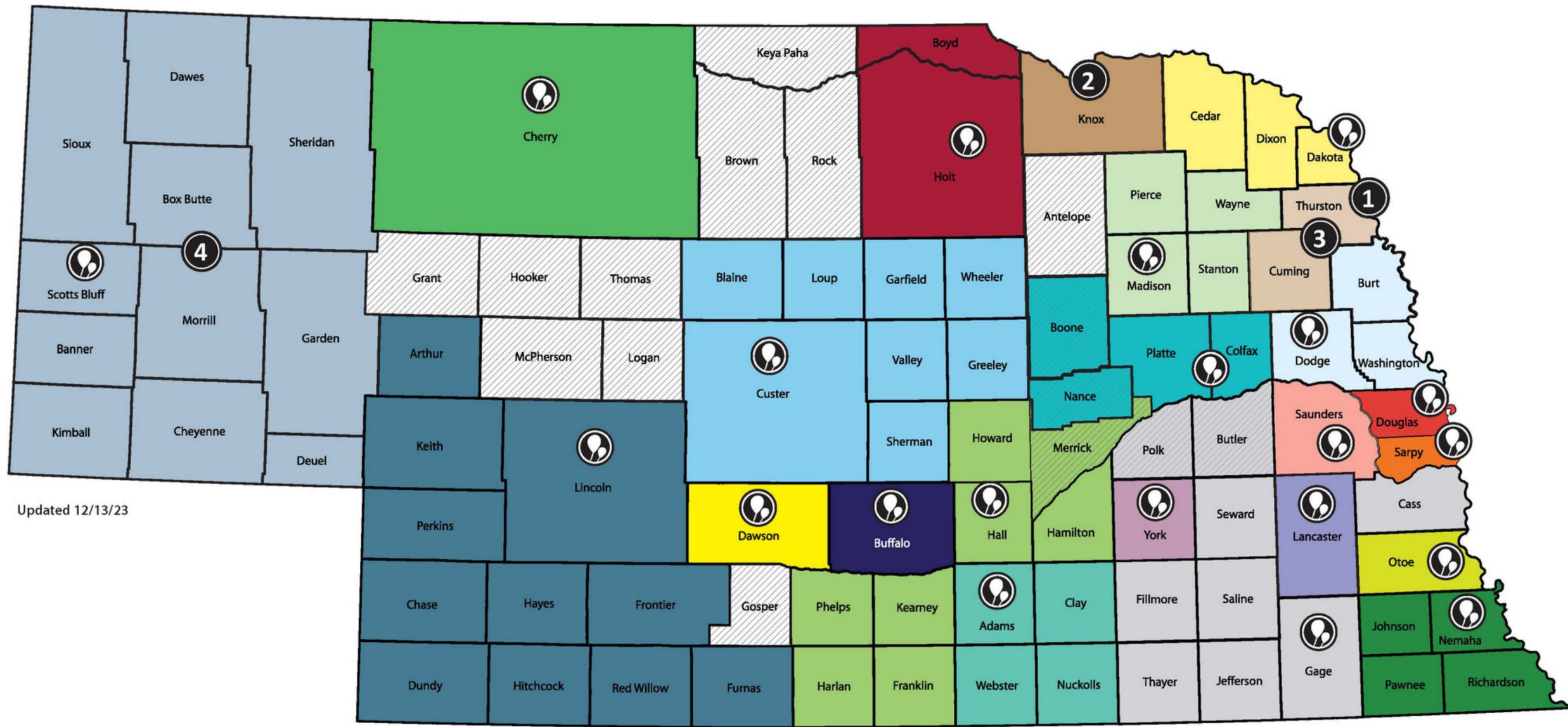
Think of 3 community level pain points your school is challenged with.

Think of 3 specific students that are dealing with issues outside of school.



Community Collaboratives





Updated 12/13/23

- Hall County Community Collaborative (H3C)
- Valentine Children and Families Coalition
- Buffalo County Community Collaborative
- Dawson County Community Collaborative
- Norfolk Family Coalition
- Families 1st Partnership
- Panhandle Partnership
- Sandhills Coalition
- Fremont Family Coalition
- Southeast Nebraska Collaborative
- Growing Community Connections
- Bridge Family Resource Connector Network/ Project Everlast Omaha
- Lift Up Sarpy / Project Everlast Omaha
- Better Together Community Collaborative
- Lancaster Connected/Project Everlast Lincoln
- Community and Family Partnership
- York County Community Coalition (YC3)
- Community IMPACT Network
- Four County Collaborative
- Saunders County Community Response
- Holt Boyd Community Connections
- CR "No Wrong Door" Coverage

Community Well-Being collaborative backbone

Community Response No Wrong Door Coverage: Community Response is a statewide system of primary prevention supports. Individuals or families can contact CR through any collaborative to access navigation support in their home community. Collaboratives provide a statewide network to ensure all Nebraskans have a community safety net available.

NATIVE COMMUNITY COLLABORATIVES:

- 1 Building Courageous Families (Winnebago Tribe)
- 2 Santee-Sioux Nation
- 3 Omaha Tribe of Nebraska
- 4 Western Nebraska Tribal Community Response (supported by the Santee-Sioux Nation)



Community Coordination



Health

Basic Needs

Education

**Individual
& Family
Pathways**

Workforce

**Older Youth
Specific Supports**



Older Youth Pathways



Youth Leadership



PALS Coaching



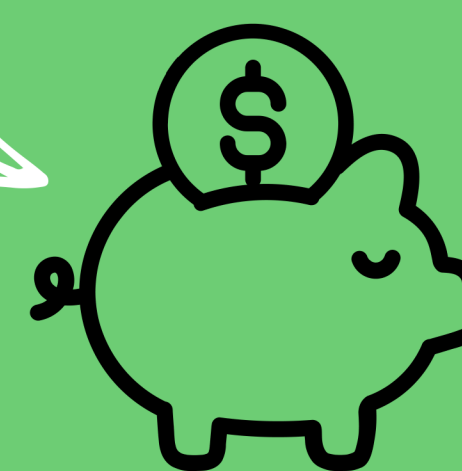
Youth Advisory Boards



Legislative Days



Post Secondary Education



Opportunity Passport[©]



Participants Served Through Central Navigation July 1, 2022 - June 30, 2023

Total Participants: 6,200

Children: 7,292

Participants Served Through Individual-Level Prevention Strategies 2022-2023

Number of Participants Served Directly: 13,228

Number of Children Served Directly 9,711



How could a community collaborative address some of the pain points challenging schools today?

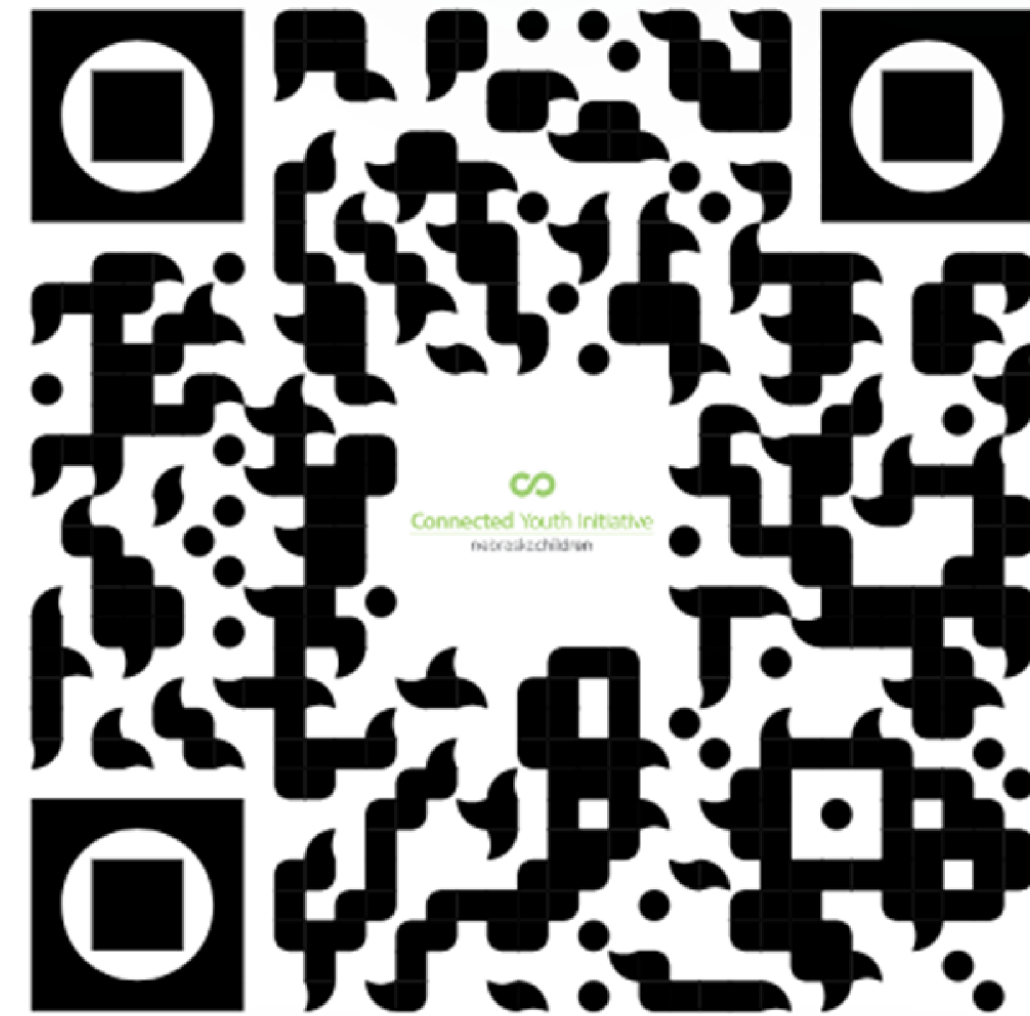
How could a community prevention system support students facing outside of school issues?



Accessing Community Prevention Services



Central Navigation Contacts & Community Collaborative Map



Older Youth Services



Thank you!



nebraskachildren
AND FAMILIES FOUNDATION

www.NebraskaChildren.org

Brady Rhodes

Community IMPACT Network
coordinator@unitedwayscne.org

Keenan Page

Nebraska Children & Families Foundation
kpage@nebraskachildren.org

Leonor Fuhrer

Nebraska Children & Families Foundation
lfuhrer@nebraskachildren.org