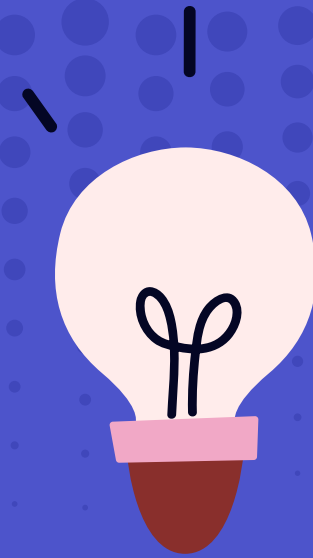


jdicostanzo@nebraskachildren.org

The

PRIMETIME FOR PATHWAYS

**Using OST for Career
Exploration**



THE CHALLENGE

- The challenge: Bridging education and workforce opportunities
- The opportunity: Utilizing Out of School Time (OST) as a career pathway strategy
- The power of cross-sector collaboration



Introduction

SMALL DISCUSSION

- What challenges have you seen in aligning education with workforce opportunities
 - Or other partnerships?
- How do you think OST programs could support career development in your community?



IDENTIFYING A COMMON GOAL



The York Pilot

- The shared vision: Preparing students for workforce success through experiential learning
- Aligning education, industry, and workforce partners
- Addressing gaps in dual-credit and work-based learning (WBL) opportunities

What are the biggest gaps in career readiness that you've observed?

How can we better align educational opportunities with workforce needs?

KEY PLAYERS AND PARTNERSHIPS

- York Public Schools (YPS) – Leading student engagement and CTE integration
- Southeast Community College (SCC) – Providing dual-credit and postsecondary alignment
- York Chamber & Economic Development Organizations – Engaging employers and aligning industry needs
- Nebraska Children and Families Foundation (NCFF) – Supporting program development and sustainability



Who are key players in your community that could support similar initiatives?

How can partnerships between schools and businesses be strengthened

CROSS-SECTOR CONTRIBUTIONS

- Education Partners: Identifying student needs and curriculum alignment
- Workforce & Industry: Offering real-world learning experiences through internships and apprenticeships
- Economic Development Organizations: Bridging local workforce needs with education
- Community & Nonprofits: Providing additional support and wraparound services

**A STRONG EDUCATIONAL FOUNDATION
BROADENS CAREER CHOICES AND OPENS DOORS
TO PROFESSIONAL SUCCESS.**

What role do you see community organizations playing in career pathway development?

How can we ensure cross-sector contributions remain balanced and effective?



SHAPING THE INITIATIVE

- Recognizing existing efforts and leveraging strengths
- Need for a dedicated Education-Industry Navigator
- Emphasizing dual credit + paid employment + career coaching
- Expanding access to rural and underrepresented students
- Education-Industry Navigator Role was seen as a potential solution to create more WBL.



How can we ensure career pathways are accessible to all students, including those in rural areas?

What are key qualities an Education-Industry Navigator should have?

OVERCOMING CHALLENGES



The York Pilot

- Funding concerns: Addressed through blended financing (grants, employer buy-in, workforce board contributions)
- Clarifying distinction: Enhancing—not duplicating—existing efforts
- Logistical barriers: Addressing transportation and scheduling issues

What are some common barriers you've faced in implementing career pathway initiatives?

How can we creatively address transportation challenges in workforce development programs?

NEXT STEPS AND CALL TO ACTION

- Next Steps:
 - Pilot implementation and scaling
 - Employer and student engagement
 - Ongoing evaluation and refinement
- Call to Action:
 - Join us in expanding career pathways
 - Collaborate with education and industry leaders
 - Advocate for sustainable WBL models



SCHOOLS AND WORK BASED LEARNING ENVIRONMENTS HELP STUDENTS FORM MEANINGFUL RELATIONSHIPS AND DEVELOP SOCIAL INTELLIGENCE.

jdicostanzo@nebraskachildren.org

THANK YOU FOR ATTENDING

QUESTIONS & DISCUSSION

