

BEYOND SCHOOL BELLS

2022-2023 ANNUAL REPORT



Jolene Johnson, Ed.D.
Director, Education and Child Development

Allison Jadoobirsingh, M.S.
Program Evaluator, Education and Child Development

Sasha Spencer, M.Ed.
Program Evaluator, Education and Child Development

Becky Skoglund, M.A.
Assistant Project Director, Education and Child Development

Megan Volz, M.S.
Program Evaluator, Education and Child Development

Munroe-Meyer Institute
Education and Child Development
University of Nebraska Medical Center
6902 Pine Street
Omaha, NE, 68106
jolene.johnson@unmc.edu



TABLE OF CONTENTS

- Overview of Beyond School Bells 2
- ELO Innovation Network 4
 - Grants Overview 5
 - BSB Partners 6
 - Summer of Youth 20
 - Career Pathways 22
 - E-CAP 23
 - Engineering 27
 - Entrepreneurship 29
- Youth Voice 32
 - Brainstorming Project 33
 - Youth Leadership Council (YLC)..... 35
 - Design Studios 37
 - Videography Clubs 39
 - Photovoice 41
- Family Engagement 43
 - Family Engagement Grants 44
 - Backpacks 48
- ESSER III 50
- Statewide Professional Development & Trainings 54
 - Conferences 55
- National Reach 57
 - National Partnerships 58
 - TMCs 60
 - Million Girls Moonshot (MGM) 62
- Policy Work 64
- Philanthropic Partners 65
- Summary and Looking Ahead 66
 - Lessons Learned 67
 - Future Plans 70

OVERVIEW OF BEYOND SCHOOL BELLS



Beyond School Bells is an initiative of the Nebraska Children and Families Foundation (NCFF), whose mission is to create positive change for Nebraska’s children through community engagement. The focus of Beyond School Bells is to provide expanded learning opportunities (ELOs) to youth in grades K-12 across the state of Nebraska. These opportunities include hands-on, engaged learning for students outside of their regular school day.

Research shows that when youth regularly participate in high-quality, expanded learning opportunities, their attendance, positive behaviors, and overall school work increase and improve. High-quality learning programs can help low-income students succeed academically, and can also help high-performing students stay engaged and achieve greater levels of understanding. These programs, characterized by strong school-community partnerships, are critical to Nebraska’s future economy.

THE CORE ABCS OF AFTERSCHOOL SUCCESS:



- ATTENDANCE INCREASES
- POSITIVE BEHAVIORS INCREASE
- CCOURSE WORK IMPROVES

Beyond School Bells is dedicated to partnering with other organizations to improve access to and quality in Nebraska’s ELO programs. We support ELO system-makers and educators as they work to build an educational system that better serves all Nebraskans. Local partnerships are built to bring new energy to the ELO space and to help build long-term sustainability for ELO programs.

The Beyond School Bells team also builds partnerships between Nebraska initiatives and national organizations committed to providing more youth with access to high-quality ELOs.

“

I love this program! My child loves going and sometimes will prefer the program to coming home. I have seen the excitement she has when they complete projects and friends that she gets to see. Its a great program and was definitely needed for the community! Teachers and student aids are amazing!!!

”

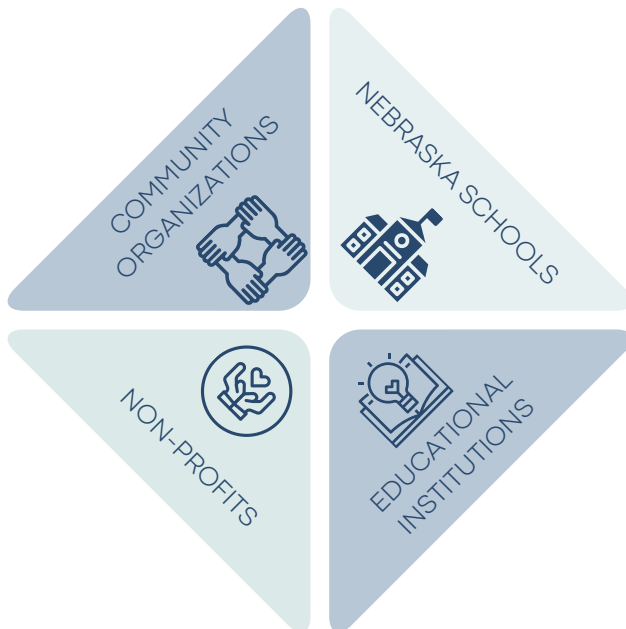
ELO INNOVATION NETWORK

PROJECTS

In 2020, with the generous support of the Nebraska Department of Education and private philanthropic partners, Beyond School Bells successfully launched the ELO Innovation Network.

The ELO Innovation Network connects and supports new and established afterschool programs with national best practices and informal education providers. Partnerships are formed to strengthen and support more high-quality, cost-efficient, locally sustainable afterschool and summer learning programs.

ELO INNOVATION NETWORK PARTNERS INCLUDE:



THE ELO INNOVATION NETWORK INCLUDES FOUR COMPONENTS:

CENTERS OF EXCELLENCE

Supports established organizations to develop resources that can be shared statewide

ELO DESIGN STUDIO

Provides opportunities to design and pilot new ELO content

PROGRAM ENHANCEMENT

Support for communities expanding existing ELO programs

PILOT PROGRAMS

Support to communities launching new ELO initiatives



OVERVIEW OF ELO INNOVATION NETWORK GRANTS



BSB PARTNERS GRANT PROGRAM

\$296,706 AWARDED IN 2022-2023

The Beyond School Bells Partners Grant is awarded to schools and school districts working to make their ELO programs exciting, engaging, inspiring & supportive learning environments for children and families in their communities.



SUMMER OF YOUTH

\$171,971 AWARDED IN 2023

The Summer of Youth 2023 Grant provided unique summer learning opportunities for youth across Nebraska to create enriching, impactful, and lasting experiences.



CENTERS OF EXCELLENCE (COE)

\$325,273 AWARDED FOR 2022-2023

These grants support established organizations with expertise in their fields to develop high-quality resources that can be shared statewide.



PROJECT-BASED GRANTS

\$356,198 AWARDED FOR 2022-2024

BSB provides a range of project specific grants including Family Engagement, Youth Videography, Entrepreneurship, Environmental Education, and more.



ESSER III

\$10,925,714 AWARDED FOR 2022-2024

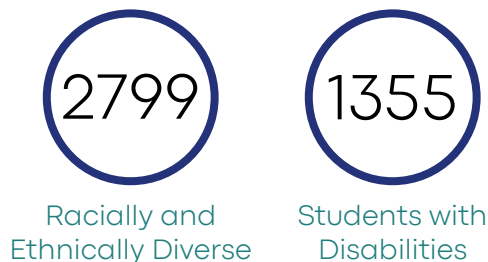
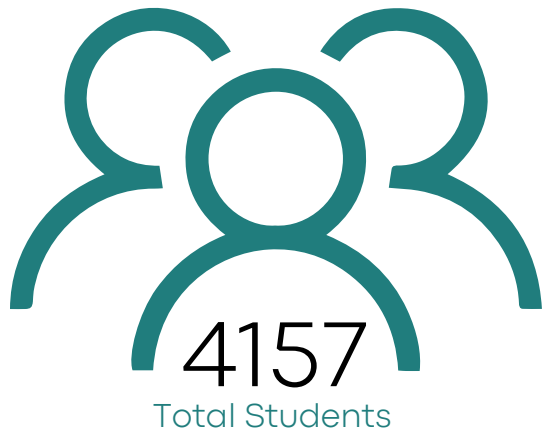
While not the grantor, BSB is helping the NE Department of Education administer ESSER III COVID-relief funding to support the growth of new and expansion of existing afterschool programs. The BSB team provides TA & coaching support to new programs and coordinates grant compliance and evaluation.

Total BSB Grants \$1,150,148



BSB PARTNERS GRANT PROGRAM

WHO WE SERVE



SITE TYPE

32	Elementary
10	Middle/Junior High School
1	High School

100% of sites were in rural communities

In 2013, Beyond School Bells initiated the Nebraska Statewide Coalition of Community-wide ELO Systems—which launched grant-based partnerships between Beyond School Bells and school-community ELO partnerships in multiple communities across Nebraska. In 2021, the BSB Coalition Grants were renamed and expanded to become the BSB Partners Grants. Recipients of the BSB Partners Grants are schools and school districts working toward making their ELO programs exciting, engaging, inspiring, and supportive learning environments for the children and families in their community.

Beyond School Bells' Partners Grant Program focuses on four primary goals:

- ✿ Enhance the long-term sustainability of high-quality, community-based ELO programming in partner communities.
- ✿ Support BSB partner efforts in developing and implementing effective communication tools, outreach strategies, and events to promote ELO awareness.
- ✿ Accelerate development of innovative, locally relevant ELO programming that meet youth needs and reflect youth interests.
- ✿ Support efforts to build and maintain high-quality staff teams that are informed of current best practices in youth education and ELO innovations in youth development.



To meet the program goals, 2022-23 grantees could apply for funding in the following areas:

PARTNERSHIP DEVELOPMENT

- Lights on Afterschool events
- Marketing
- Development of Community and Student Advisory Teams
- Hosting Community Partner meetings with potential partners
- Attending Community Collaborative Meetings

STAFF DEVELOPMENT

- Professional development
- Implementing innovative staffing models such as engaging high school students as staff

INNOVATIVE PROGRAMMING AND SUPPLIES

- STEM, STEAM, or other clubs
- Youth-driven programming
- Design Studios

STEM FAMILY ENGAGEMENT

- Family engagement events with meals and STEM activities
- Professional development around engaging families through STEM



The 2022-23 Partners Grant Program included eleven communities across Nebraska. Each ELO program worked with BSB to create a grant package that fit their local context, needs, and capacity.

BSB PARTNER COMMUNITIES

- | | | |
|----------|--------------|---------------|
| Chadron | Kearney | Oakland Craig |
| Columbus | Lexington | Schuyler |
| Crete | Norfolk | York |
| Fremont | North Platte | |

SERVING A POPULATION THAT WAS

- | | | |
|----------------------------|----------------------------|---------------------------------|
| 69% | 33% | 67% |
| Economically Disadvantaged | Students with Disabilities | Racially and Ethnically Diverse |



Programs showed a spirit of togetherness, creativity, and continuous learning. ELO youth leaders and teaching staff participated in professional development activities that enhanced their mentorship and leadership skills as they developed and implemented high quality ELO programming. Students participated in new and existing clubs which allowed them to learn new skills and express themselves creatively. Grantees felt empowered to strengthen community and program relationships through Community and Student Advisory teams.

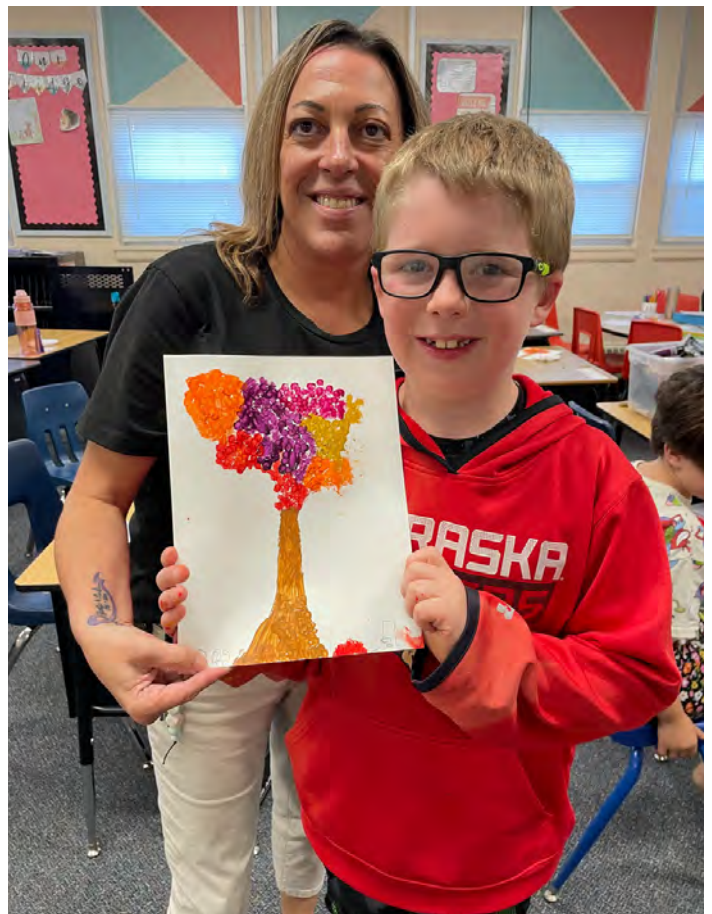
Student Advisory Teams provided input that was used to inform programming offerings, providing valuable insights into preferences and interests.

Programs **restocked Maker Spaces**, started art clubs, or expanded existing STEM and craft clubs that allowed students to be creative and innovative.

Community Advisory Team members advocated & raised awareness about afterschool programs and informed family and community engagement strategies.

Family events were held that included meals, STEM and sports activities, and themed nights such as carnivals.

Nine programs received funding for **marketing expenses**.



COMMUNITY COLLABORATIVES

Nebraska Children and Families Foundation supports a network of Community Collaboratives that are hubs of local stakeholders working to improve community well-being. Community collaboratives bring local strengths and services together with the aim of supporting families by giving them access to services they need to thrive so they can stay together, remain self-sufficient, and support the health and learning of their children.

Partners Grant recipients are encouraged to attend their local

community collaborative meetings. ELO program staff who could attend the meetings reported that participating was beneficial to their program and to the families they serve.

A few sites shared that participating in Community Collaboratives ensures that their programs are a part of conversations about community concerns and that they help develop shared solutions to these issues. **Of the 11 Partners Grant programs, 9 attended collaborative meetings and some reported attending as many as 6 meetings during a 6-month period.**

Collectively, the 9 programs attended **32 Community Collaborative meetings** over the last year.



COMMUNITY ADVISORY TEAMS

Community Advisory Teams are teams of stakeholders from the community that ELO programs bring together to inform after-school practices.

Currently, four BSB Partners grantees utilize Community Advisory Teams. The advisory teams are a diverse group of stakeholders, including parents, educators, administrators, community partners, and students. While some teams have been active for varying durations, others are newly formed.

The advisory teams meet at least 3-4 times over the year to discuss and provide recommendations for the

“

While writing grants, we collaborate with the advisory team as we brainstorm program ideas, tying activities into community events and how to braid funding sources. Our advisory team also advocates for our program as community members and attend ASP [afterschool program] events such as Lights On [Afterschool] and other family events.

”

improvement and enhancement of their respective programs. Grantees can use BSB support to provide meals or refreshments during meetings or to advertise to recruit members.



STUDENT ADVISORY TEAMS

Student Advisory Teams are teams of students convened by afterschool staff for the purpose of lifting youth voice to inform afterschool practices. Giving students a voice empowers them to actively shape their educational experiences and contributes to their overall personal and social development.

Students are more likely to participate and thrive in clubs that reflect their diverse interests, which leads to a more vibrant, inclusive, and student-centric ELO environment. BSB grantees can use grant funds for meals and hands-on activities for these meetings.

During the 2022-23 grant period, five BSB Partners grantees utilized Student Advisory Teams:

North Platte Public Schools Kids Klub
Cardinal Community Learning Centers (Crete)
Columbus After School Program
Lexington Afterschool Program
York After-School Program

While some Student Advisory Teams have been active for varying durations and others are newly formed, they met at least 3-4 times a year and included students from grades 1-12.



ACCOMPLISHMENTS INCLUDED:



Student Advisory Teams played essential roles in helping to plan and execute clubs



Students gave insightful advice on what they would like to see occurring in their afterschool space



Student suggestions were turned into clubs or other programming at their sites



Students felt proud to participate on advisory teams and practiced leadership and planning skills

LIGHTS ON AFTERSCHOOL

Each year in October, the Afterschool Alliance organizes a nationwide event to



celebrate afterschool programs and the important work they do for students, families, and communities called Lights On After School (LOA). LOA events typically include inviting families,

businesses, and local policymakers to the program for activities that offer fun learning opportunities and raise awareness around the importance of ELO programs. This year, LOA celebrated its 24th year.

NE ELO programs participate by holding local LOA events. BSB Partners grants can be used for event supplies, food, and marketing. Nine BSB Partner sites hosted a LOA event during the grant period. Most of these occurred in late October with support from community partners. Programs reported advertising for their LOA events with flyers, newspapers, local radio ads and social media.



“For our LOA Event, we partnered with our community partners and hosted a Trunk or Treat. This year we had our 4th Trunk or Treat and we had a little under 50 partners join. It was a great turn out. The first year we did our trunk or treat we had 7 partners. So this was a great event for us.”

“Chadron Middle School Afterschool program celebrated on Thursday, October 20, 2023 with a "Snacks On Afterschool Activities." Fifth-eighth grade students and family members extracted Fruit DNA, ran Fruit Salad Relay race, learned about My Plate, and made Dirt Cups and Oodles of Noodles in the Family and Consumer Science Kitchens.



INNOVATIVE PROGRAMMING AND SUPPLIES

BSB Partners Grants allow sites to further develop their learning programs and services in innovative ways that foster curiosity and creativity by flexibly providing funds for many different types of supplies integral to high-quality programming. Examples of activities in the Innovative Programming and Supplies grant category during the reporting year included purchasing supplies for outdoor activities, art projects, increased hands-on learning opportunities, and removing food insecurity related barriers to participation by purchasing food for students.



MATERIAL PURCHASES INCLUDED:



18 instances of programs purchasing supplies for STEM activities



20 instances of purchasing food, including supplies for culinary clubs



11 instances of food or supplies purchased for outdoor activities

In addition, BSB supported **at least 26 field trips for BSB Partners programs.** Field trips included the Strategic Air Command and Aerospace museum as a part of the Mission to Mars club, Hastings Museum and Planetarium, The Bay in Lincoln, and trips to Harmon Park where students worked with Kearney Parks and Recreation to help replant and rebuild their famous Rock Garden. Grantees reported that field trips introduced students to new local resources and broadened their horizons.

“

This money was vital for us to sustain numerous middle school clubs that tie into STEM such as our Cricut club, Lego club and gadgets and gizmos club.

”

CLUBS

Communities involved with the Partners Grant Program implemented various activities, curricula and experiences into their learning programs. Six Partners grantees implemented 21 BSB-supported clubs over the course of the 2022-2023 school year.

BSB Partners could offer incentives to staff to lead clubs and many utilized the near-peer mentor model by using funds to provide stipends to high school students who led activities. Clubs gave students opportunities to explore hands-on, innovative projects interesting to them.

CLUB TYPES INCLUDED:

8 STEM Clubs

3 Environment/Agriculture

2 Mission to Mars

2 CityBuild 2024

1 Physical Sports

1 Civics

1 Well-Being

1 Robotics

1 Book/Reading

1 Art

PROGRAM HIGHLIGHTS

- ✿ *One program had students use a Cricut to create projects that highlighted the importance of afterschool programs and how they positively impact their school and community.*
- ✿ *Another program used coloring books that highlighted careers in STEM. Staff spent time coloring with students while talking with them about what they wanted to be when they grow up and what STEM careers might be available to them.*



STAFF DEVELOPMENT

INNOVATING STAFFING: OLDER YOUTH STAFF

ELO programs across Nebraska are dealing with staffing shortages in innovative ways. One leading approach is to utilize older youth to provide additional staff support to afterschool and summer programs so they can serve more kids and provide near-peer mentorship for younger students.

BSB Partners communities utilize both high school and college staff to support ELO activities. **All 11 BSB partners have high school students on their staff** and 10 of the 11 partners have college students, one program had as many as



50 college students supporting their community's ELO sites. College and high school students expanded their leadership skills through facilitating after school clubs and ELO programs enjoyed increased capacity to support more students.

High school student staffers supported programs by:

- 🌸 Developing new clubs or activities
- 🌸 Leading clubs or activities during ELO time with the assistance of adult leaders
- 🌸 Helping students with homework
- 🌸 Supporting clerical work such as checking students in and out of programs

College students provided additional supports to ELO programs by developing lesson plans, providing mentorship and behavior management support, and assisting with parent communication.

PROFESSIONAL DEVELOPMENT

Nine BSB Partners sites received funds for Professional Development and collectively spent **more than 440 hours on professional development** activities for their ELO staff. Professional development activities focused on classroom management, behavioral management and family engagement.

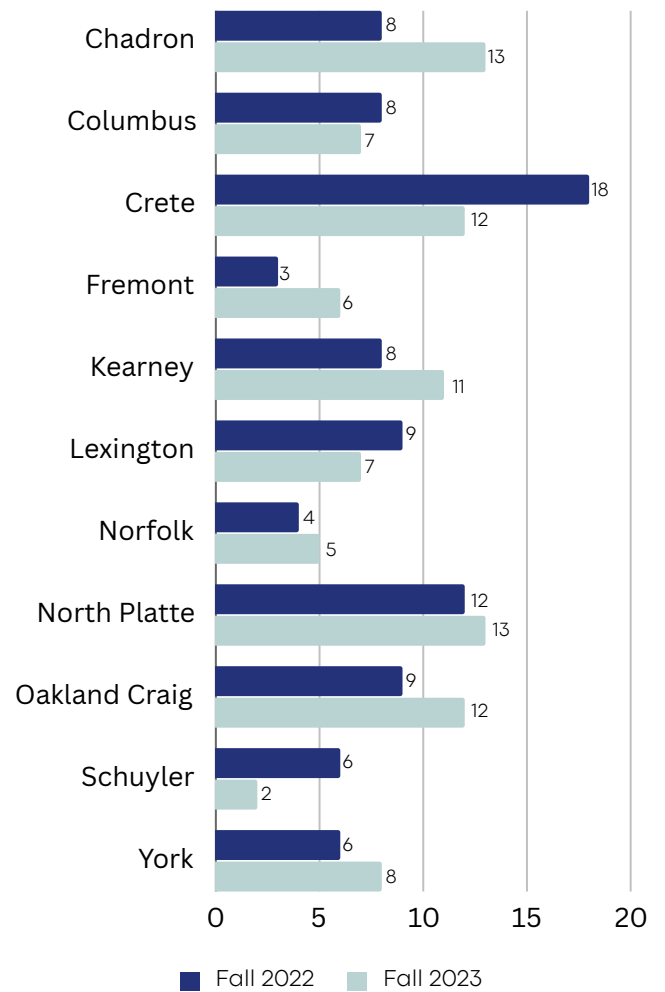
PARTNERSHIP DEVELOPMENT

Building partnerships with local community stakeholders is a hallmark for high-quality ELO programming and sustainability. As discussed above, BSB helps facilitate community partnership building efforts by offering funds that can be used for marketing and for holding Community Advisory Team, partner recruitment, and relationship building meetings.

The communities involved in the BSB Partners Grant Program connected with different organizations, sites, and local businesses during the grant period to provide afterschool and summer learning opportunities to children and families across Nebraska. The local partnerships made within each of the communities vary in number, type, services provided, and activities made available to children and families.



BSB PARTNERS AT A GLANCE



5.6%
growth

Partners Grant programs reported more total partnerships in Fall 2023 than in Fall 2022

91 → 96

Note: For a detailed list of each program's community partnerships, see Appendix A2.



CENTERS OF EXCELLENCE

The ELO Innovation Network recruited community organizations and school districts to identify, develop, test, and distribute best practices that will enhance high-quality, locally sustainable ELO programs across Nebraska.

Participating organizations were tasked with designing and field-testing fun, hands-on programming and systems to empower youth, family engagement activities, staffing solutions, and other innovations in Nebraska. Grantees could support this project by:

- ✿ Designing youth-oriented curriculums and activities to add to an online ELO toolkit
- ✿ Piloting and scaling up newly developed programming
- ✿ Creating professional development resources to support afterschool staff who are implementing new or previously developed ELO activities
- ✿ Offering coaching for adult and student staff to showcase and share best practices

Access the Online Toolkit

<https://bsbtoolkit.org/improving/centers-of-excellence.html>



WHO WE SERVE Centers of Excellence

9

Grantees



19

Communities participated in ELO programming



All programs were awarded year-long grants.



Awards per program ranged from \$25,924 to \$30,000.



OUTCOMES

Beyond School Bells funding supported nine Centers of Excellence in 2022-2023. BSB sought contributions from nonprofit organizations and school- or community-based programs with a wide range of expertise related to ELO programming, staffing, and partnership development. As a result of the push for unique perspectives, the final products offered hands-on ELO resources for a variety of audiences, subjects, and budgets.



Civic Nebraska: Developed service-learning curriculum and staff training videos with additional curated grab-and-go kits for educators in topics of community beautification, food and nutrition, and storytelling. Students at pilot sites designed and built community gardens and organized donation drives.



Center for Great Plains Studies: (*Grant in progress*) Created age-appropriate eco-art lesson kits for K-8 students. Curriculum engages students in ecosystems, native plants, pollinator, and conservation practices by exploring nature through art.



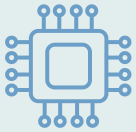
Edgerton Education Foundation: Facilitated student-led curriculum creation. High-school students designed lessons and hands-on activities to support STEM-based learning at Edgerton Explorit Center's 52 summer camps. Curriculum designers learned how to write step-by-step lessons to improve administration and use stories to engage students.



Future Kids: Provided on-site soccer coaching and programming for afterschool and summer programs in rural Nebraska. Included 1- to 2-day clinics, 1- to 8-week camps, weekly soccer clubs, and even Esports coaching at two sites.



Nebraska Farm Bureau Foundation: Developed 20-lesson curriculum to teach NE students food scalability, botany, and environmental science while growing produce. Curriculum piloted at three afterschool sites, who each received five hydroponic towers and supplies for growing salad greens.



Nebraska Innovation Studio (NIS): Created 10 follow-along Makerspace video guides to instruct students on skills such as creativity, collaboration, and critical thinking. Along with the video series, college students employed by NIS incorporated robotics activities into Think Make Create (TMC) trailers and used the CNC router at NIS to build an early childhood TMC.



Rabble Mill: Production of a seven-video curriculum structure to support middle and high school Youth Videography Clubs. Videos include demonstrations of writing interview questions, lighting scenes, and shooting B roll.



Strategic Air Command (SAC) Aerospace Museum: Developed and piloted 8-week curriculum to engage elementary and middle-school students in hands-on exploration of space-based STEM. The museum created 45-minute lessons to introduce students to contemporary NASA directives, such as the James Webb Space Telescope and the Artemis Mission series.

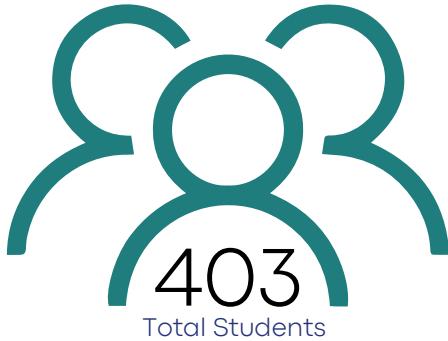


Spring Creek Prairie Audubon Center: *(Grant in progress)* Creation of a middle- and high-school level curriculum to facilitate hands-on exploration of 7 STEM careers (e.g., botanist, mammologist, herpetologist). Included an adaptable framework & program outline to accommodate additional career exploration.

SUMMER OF YOUTH



WHO WE SERVE



Elementary



Secondary



SITE TYPE

5 Elementary

2 Secondary

1 Community



RURAL

URBAN



75% of Non-ESSER grantees offered full-day programs



\$171,971

Funds Awarded to Programs

The Summer of Youth 2023 grant was designed to support programs in providing summer experiences that Nebraska students value. Grants were divided into three categories identified during a statewide youth brainstorming process conducted by BSB and the Cultural Competence Center (CCC):

- 
Movement and outdoor learning
 Examples: Sports, outdoor classrooms, gardening, and environmental science.
- 
Life skills and career pathways
 Examples: Entrepreneurship; Science, Technology, Engineering and Math (STEM); and cooking
- 
Experiential learning via local partnerships
 Examples: Programming that links youth with local businesses or professionals, and local environmental projects.

Grantees were required to include at least one youth-directed topic in their summer programming .

BSB awarded Summer of Youth grants to 8 non-ESSER ¹ programs and provided technical assistance and coaching to 24 total programs that included both ESSER-funded and BSB-funded sites. More information about Summer of Youth at ESSER sites can be found in the ESSER Collaborative ELO Summer 2023 report.

¹ ESSER refers to the ARPA Elementary and Secondary School Emergency Relief Fund (ARPA ESSER; also referred to herein as ESSER).



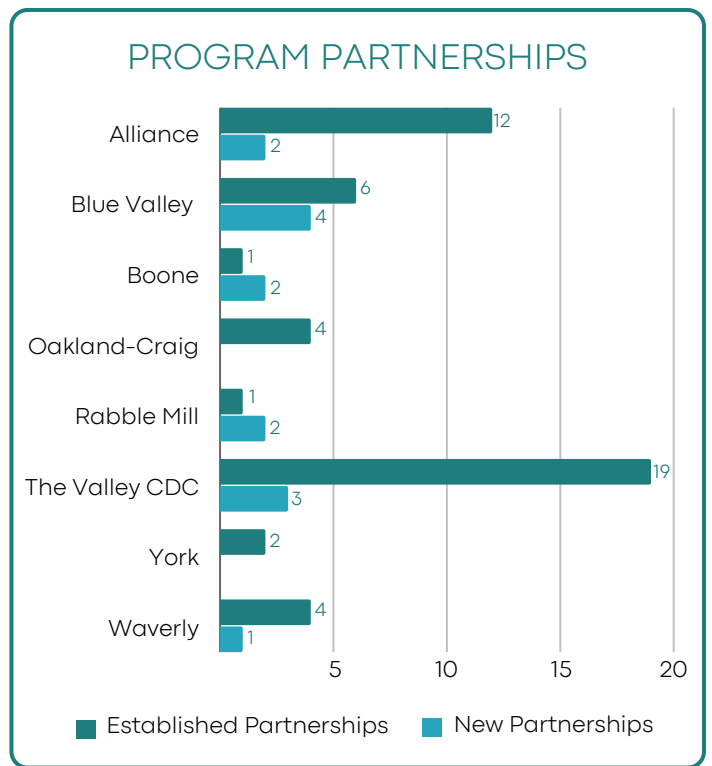
OUTCOMES

Sites used funds to support youth summer experiences in a number of ways, including:

- ✿ **Field Trips:** Rock climbing at University of Nebraska-Lincoln, sports classes at the high school, fishing, geocaching at the park, the zoo, Schramm Education Center, Durham Museum, Nebraska Innovation Studio, bowling, local businesses, swimming at the pool
- ✿ **On-site programming:** Microgreens cultivation, mural painting, building bird feeders, City Build, multicultural cooking lessons
- ✿ **Materials:** Gardening supplies, kites, rockets, virtual reality headsets, meal ingredients for family engagement events and cooking classes

Non-ESSER site respondents (n=8) reported hosting **19 clubs** and **31 camps** during the Summer of Youth. Most respondents reported taking students on field trips, with sites reporting a total of **42 excursions**. Grants also supported 5 sites in hosting **10 family engagement events** that included STEM, art, and community engagement themes.

Partnerships were formed with state or local organizations for summer programming, which helped provide resources, general funding, programming facilitation and assistance, materials, and site staffing.



CAREER PATHWAYS



E-CAP

The Environmental Conservation Action Program (E-CAP), launched by BSB in 2021, is a programming hub from which we coordinate, support, and expand environment and conservation-oriented learning experiences for NE youth. Based on research showing young people care about the environment and want to act on their environmental concerns, E-CAP creates intentional connections that inspire, excite, and engage students through gardening and food systems experiences, local resource management, and educational and career opportunities.

From small plants in Dixie cups to raised-bed school and community gardens, grow towers, and vertical grow walls, this focus allows us to elevate and connect meaningful and impactful experiences across a student’s K-12 ELO educational pathway. Over the past two years, E-CAP has focused on three branches of activities:

 FOOD SYSTEMS

 CONSERVATION

 OUTDOOR EDUCATION



In 2023, BSB provided support to E-CAP grantees in the following project areas:

FOOD SYSTEMS

-  Promoted student leadership and ownership via project-based learning
-  Met communities where they were along their food systems journeys
-  Focused programming to reflect local context and partnership opportunities



Invested in more than 10 partner programs’ afterschool gardens, hydroponic systems, or engagement with local producers via mini-grants, summer learning expansions, and year-round project support.

Relocated our capstone experience, the Freight Farm container farm, to Lincoln Public Schools’ The Career Academy, where it will become a demonstration site and platform for integrated food systems education and career exploration programming.

CONSERVATION

Restarted our Conservation Management Summer Internship program to introduce youth to conservation careers and professionals across Nebraska.

Building on this platform, launched more programming to introduce students to conservation concepts, partners, and experiences. Collaboration with conservation professionals, and state, national & global organizations to directly engage with youth continues to be our focus.

Created new programming strands that will be piloted in 2024, including:

- GREAT PLAINS GREAT BRAINS
- WILDLIFE EXPLORERS
- MORE EXTENSIVE CONSERVATION EXPERIENCES
- GO BEYOND PARTNERSHIP



OUTDOOR EDUCATION

- ✿ Empowered youth across the state to contribute to the design and use of their outdoor spaces - including: gardens, outdoor classrooms, tree plantings, activities & materials.
- ✿ Provided summer grants to build outdoor gardens and classrooms, including TMC Labs-based activities to instigate and support school-wide outdoor education.
- ✿ Facilitated BioBlitz events, gardening clubs, as well as outdoor family events, sports programming—like Future Kids Future Soccer—and activities showing how Environmental Education can be woven into various programming strands.
- ✿ Provided professional development support and promoted access to shared resources from our state and national partners.

Each branch of E-CAP connects students to STEM activities and concepts, local partners and experiences, and career exploration.

“

I THINK ENVIRONMENTAL EDUCATION PREPARES STUDENTS TO BE AMAZING CITIZENS...IT'S ASKING THEM TO BE CRITICAL THINKERS, AND WE NEED CRITICAL THINKERS, NO MATTER WHAT CAREER A PERSON GOES INTO.

~ LINDSAY ROGERS, PROJECT WILD

”



CONSERVATION MANAGEMENT SUMMER INTERNSHIP

As part of the Conservation Management Summer Internship (CMSI) program, BSB supports annual cohorts of underserved students to participate in paid, two-week internships learning the diversity of careers in the conservation field. During their time in various natural places across Nebraska, the CMSI interns engage in hands on work and learn about careers in conservation management fields.

Students learned directly from conservation experts about what conservation looks like in different locations and within different professions, and why conservation efforts are so crucial to our environment and communities. In the summer of 2023, students participated in a variety of experiences and future career opportunities. Those included, but are not limited to:

- RESTORING NATIVE PRAIRIES
- PLANTING POLLINATORS
- CLEARING INVASIVE SPECIES
- WILDLIFE MANAGEMENT
- FOREST MANAGEMENT



ENGINEERING PATHWAYS

Beyond School Bells is excited to offer support for the creation of K-16 engineering learning pathways in afterschool and summer (ELO) programs in rural Nebraska communities. In each community:

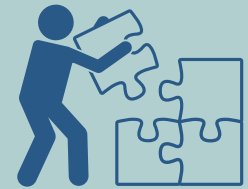
- Learning pathways are constructed with developmentally appropriate learning experiences that connect elementary and middle school ELO programming with other local engineering learning experiences
- Engineering programming is led by high school students who receive mentorship from UNL Extension-trained college students majoring in STEM/engineering relative fields

A primary goal is to build out a strong cohort of high school programming leaders, who may become candidates for the Peter Kiewit Foundation Engineering Academy scholarship, other educational opportunities including career academies, and careers in engineering-related fields.

YEAR 1 PILOT SITES






During the summer and fall 2023 pilots, BSB supported pathways in four geographically diverse rural communities

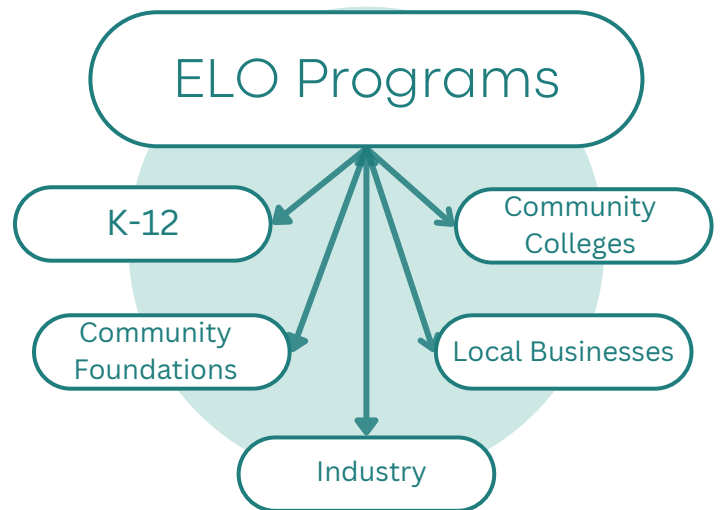
Broken Bow
Crete
Scottsbluff
Valentine



Programs also receive support to hold family engagement events at the end of each programming session, where they provide meals and science, technology, engineering and math (STEM) activities to families while students share their accomplishments and new knowledge about engineering and the design process.

Additional Project goals include:

-  Raise awareness about the relevance of STEM and especially engineering for rural communities.
-  Increase awareness about STEM educational and career path opportunities available to NE students.
-  Support rural ELO programs to build and strengthen connections with STEM-related assets in their communities.
-  Increase access to STEM for rural students, girls, and underserved students.
-  Include families in the STEM learning process.



“ This project has opened our students to thinking about STEM careers they may like to investigate in the future. The engineering design process has also enabled students to breakdown the different sections of processing that they go through when working on STEM projects. ”

AN EXCITING PARTNERSHIP

The Scottsbluff Afterschool Program connected with the local high school (HS) math club for this project. In return for 9-10 high school students leading engineering pathway programming, the afterschool program donates funds from its grant to the club, which facilitates travel and participation in national math club competitions. The connection to the math club, which has 30-40 students and a history of strong competitive performance, can provide a solid pipeline of HS students to engage with younger students in the Engineering Pathway programming. These near-peer leaders help younger students see how cool math and engineering are. The goal is that the partnership exposes younger students to more math and engineering and inspires them to participate in STEM programming when they are in high school.



ENTREPRENEURSHIP: A SYSTEMS APPROACH

Learning from our past experiences with entrepreneur-based ELO programming, BSB knows entrepreneurship can take a number of forms. Answering this reality in a way that embraces hyper-locality means we do not promote one curriculum or a single approach. Instead, we learn from community-based, home-grown models where the ELO program serves as the hub for student, family,

and community buy-in from businesses and other stakeholders. Our goal is to make entrepreneurship user friendly for programs and communities and to highlight successful models that each community can take direction from in order to create their own local entrepreneurial networks. To this end, we offer several different sets of curricula opportunities and share successful entrepreneurship models from communities such as Lexington and Norfolk with programs across the state.

THE LEXINGTON MODEL

BIGGEST STRENGTH = COMMUNITY CONNECTIONS

Lexington, an established BSB partner and 21st CCLC site, has a long-running whole-package, entrepreneurship program that includes:

- ✿ A regular marketplace with quarterly student markets and a large community event in the summer. Markets present opportunities for family engagement events and mentorships with local businesses.
- ✿ A successful advertising system: Each market has hundreds of attendees, due in part to radio and social media campaigns.
- ✿ Strong community buy-in. Through its partnerships with local businesses and stakeholders, the program



reinforces the importance of afterschool and summer programs in Lexington.

- ✿ Locally developed curriculum. Students learn about entrepreneurship using the BizKidz curriculum created by the business college at the University of Nebraska-Kearney







THE NORFOLK MODEL

BIGGEST STRENGTH = ONLINE REACH

Norfolk, a long-time BSB partner and 21st CCLC program, holds in-person student marketplace events, including a very successful downtown end-of-year holiday market.

The program's biggest strength is its year-round online student marketplace. Norfolk teaches students multiple facets about running a business, including:

-  Website creation
-  Photography and marketing
-  Tracking and shipping orders
-  Quality control

WHO WE SERVE

BSB programs in 14 COMMUNITIES participated in and fully implemented entrepreneurship programming in 2023:

Broken Bow	Fremont	North Platte
Chadron	Kearney	Omaha
Columbus	Lexington	Schuyler
Cozad	Mitchell	York
Crete	Norfolk	

Most programs focused on developing student businesses and culminated in students selling their goods at small, local marketplaces.



Average overall student participation for each program was around 50 students, not including Omaha.



Clubs were often offered twice during the school year (once each semester) and during the summer. Attendance averaged 12-15 students per session.



Students participated in programming at the Freight Farm and served the community by distributing produce to local schools and food banks.

ENTREPRENEURSHIP CURRICULA / EXPERIENCE OPPORTUNITIES

BSB partners with several entrepreneurship-focused organizations to provide no-cost opportunities for programs to select curriculum options that are best suited to their locales. Examples include:

VENTURE LABS - IDEA TO PITCH PROGRAM

Students grow their entrepreneurial mindsets and skills as they apply their passions and strengths to identify opportunities to creatively solve problems, develop their solution into a business, and pitch the idea.

UNIVERSITY OF NEBRASKA-LINCOLN ENGLER AGRIBUSINESS ENTREPRENEURSHIP PROGRAM

Four college students and one student-facilitator created a fun, hands-on curriculum to teach students the basics of entrepreneurship and give them a framework to create and pitch their own small business ideas to local entrepreneurs, business leaders, and family members.

NEBRASKA EXTENSION 4-H

NE 4H Extension connected Beyond School Bells to the Engler Entrepreneurship program, which led to a new Design Studio. BSB worked with Extension to provide entrepreneurship trainings and continues to support their efforts to work with VentureLabs to develop new curriculum supporting HS Entrepreneurship programming.



CURRICULUM IN ACTION

High school students lead programming with the Idea to Pitch curriculum and engaged students in entrepreneurial activities.

- Participants created businesses for their summer program and took a deep dive into business development & implementation.
- Students sold their goods for profit at the local farmers market on Saturdays in mid/late summer and repaid business and parent investments.
- Venture Lab provided training for high school student staff and ongoing TA.
- In Broken Bow, Idea to Pitch is offered in quarterly sessions during the school year to approximately 12-15 students across grades 3-5.

YOUTH VOICE



BRAINSTORMING PROJECT

During the fall of 2023, BSB partnered with the Cultural Competence Center LLC (CCC) to hold a second round of our Youth Brainstorming Activity with students in afterschool programs to gather their interests for afterschool and summer activities. BSB requires programs to administer their own Youth Voice Data gathering process or to incorporate findings from the BSB-CCC administrations of the process in select grant projects.

Building on the first round administered in 2022, the Cultural Competence Center LLC (CCC) identified themes based on how the youth suggested club or opportunity might be implemented. Each student’s suggestion for future activities or clubs was coded based on one theme that best matched their suggestion.

STEM

- Structured/self-directed
- STEM-related trips
- Coding, design
- Construction, building
- Math club
- Creating hair products

Life Skills

Learning “how to” do something that leads to self-help or self-care

- Swim lessons at the YMCA
- Hair, nail care
- Scouts
- Talk about jobs
- Cooking, making food
- Civic & community engagement

For example:

- ✿ “Trip to the library” was coded as literacy.
- ✿ “Trip to Mexico to watch a soccer match” was coded as experiential because the student was seeking a unique experience.
- ✿ Other themes included: Arts, Culture, eSports, Life Skills, Sports, and STEM.

WHO WE SERVE



SITE TYPE

- 9 Elementary
- 1 Middle school
- 1 High school

13 total groups participated, representing **9 school districts**



Total Students

105

Elementary

10

Middle school

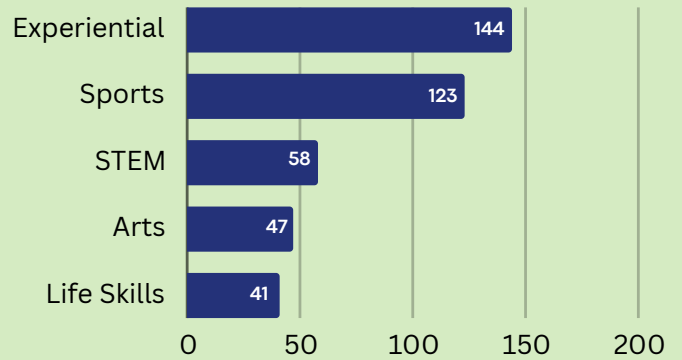
9


High school

FINDINGS


-  Sports and experiential activities topped the list of suggestions from students for both administrations.
-  Students in small districts (<6000 students) chose experiential activities most frequently, students in large districts (>30,000 students) selected sports activities more frequently.
-  Elementary students listed sports, experiential, and STEM activities as the top three categories for programming.
-  Secondary students listed experiential, sports, and eSports as the first three activities.

TOP FIVE THEMES FROM STUDENT'S 'YOUR IDEAS' RESPONSES



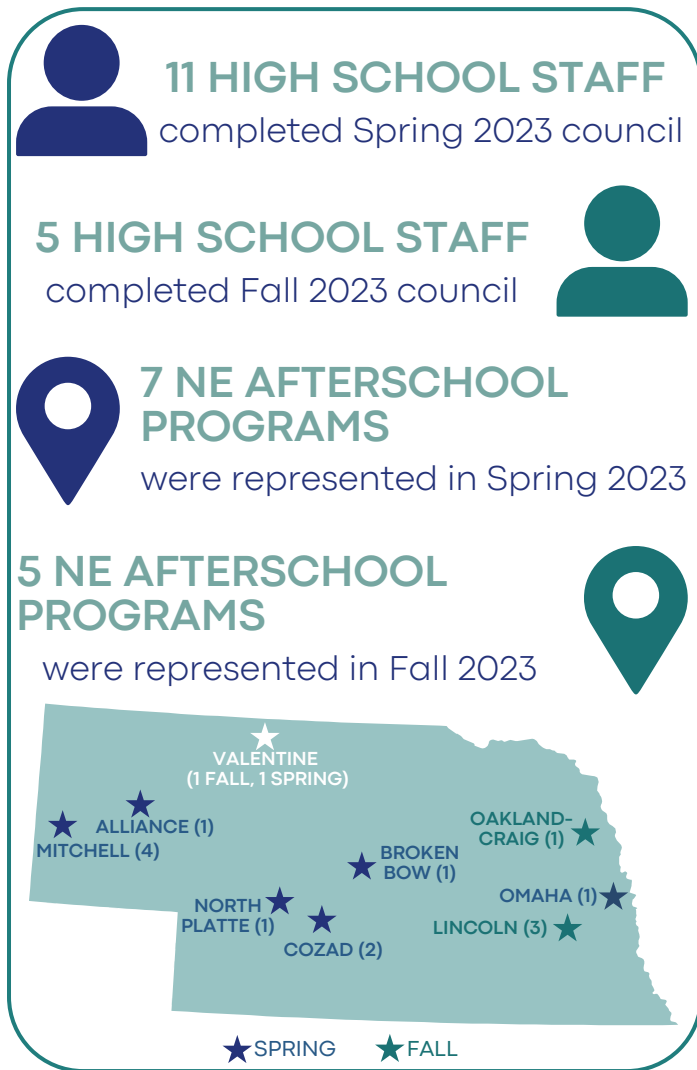
-  High school students suggested 55 total experiential activities, far exceeding any other category; eSports was second most frequent suggestion.



 For a full accounting of findings, themes, and theme definitions, see the full report on BSB Website at <https://beyondschoolbells.org/youth-voice/youth-brainstorming-sheets.html>.



YOUTH LEADERSHIP COUNCIL (YLC)



PROJECT

The Beyond School Bells (BSB) Youth Leadership Council (YLC) was created to raise youth voice in afterschool and summer programs across Nebraska. The council is made up of high school students who currently work in their local afterschool programs. As a part of this semester-long experience, council members created and proposed projects to either improve an aspect of their afterschool program or fill an unmet need within their afterschool community.

HERE'S WHAT YLC STUDENTS SAID:



Feel more confident taking on a leadership role in their program



Learned one or more tactics to better engage with students



Would recommend a YLC membership to a friend

“AFTERSCHOOL PROGRAMS PROVIDE AN OUTLET OF LEARNING FOR KIDS WHERE THEY DON'T HAVE TO WORRY ABOUT GRADES AND CAN ENJOY LEARNING AND PRACTICE TEAMWORK.
~ AMANDA G.”



PROJECT PROPOSAL SPOTLIGHT

LENA K.



LINCOLN, NE
FALL 2023 COUNCIL



Lincoln North Star
High School



Grade 12



Program Support
Staff at Cambell
Elementary School

YLC PROJECT: PARENT NEWSLETTER

“BRIDGING THE GAPS”

“Through this project, I hope to allow parents and staff to feel more involved and aware of what goes on during those three hours after the school bell rings. CLC programs should feel like a part of the community and an extension of the school day. Hopefully, sharing [about the program] through newsletters and newsblasts can bridge the gaps that [often] exist between teachers, families and afterschool programming!”

PROGRAM SUCCESSES

- ✿ Provides opportunities to positively impact their own afterschool program.
- ✿ YLC creates a sense of belonging, camaraderie, and provides staff with a network of peers who have the same passion for working with kids and the afterschool program.
- ✿ YLC has become a place for high school staff to problem solve and share experiences and ideas regarding behavior management.
- ✿ Real-time communication and support from Beyond School Bells

FUTURE GOALS

- ✿ Increase the number of meetings from 9 to 15 in order to provide staff with more professional development and discussion opportunities, as well as more support.
- ✿ Provide more time for students to get to know each other, build rapport, and share ideas through one-on-one meetings that are facilitated by BSB staff.
- ✿ Start the next cohort in October, which would allow more time for recruitment.
- ✿ Offer a summer cohort for students who are too busy during the school year.



DESIGN STUDIOS

Design Studios/Design Sprints are iterative design processes facilitated by Beyond School Bells (BSB), afterschool program staff, and industry professionals where high school and college students come together over a shared topic and design fun, engaging, hands-on curriculum for K-12th grade students enrolled in afterschool or summer programs.

CURRICULUM DEVELOPMENT

Design Sprints occur over students' school breaks, including summer, fall, and winter breaks. Students from the following educational institutions and organizations have developed curriculum in the Design Studio process:

UNL ENGLER PROGRAM

NEBRASKA INNOVATION STUDIOS

WAYNE STATE COLLEGE

UNL HONOR STUDENTS

UNL STUDENTS

CIVIC NEBRASKA

LINCOLN CLC STAFF & STUDENTS

WHO WE SERVED



140 Students

14 Afterschool Programs

Run from 2019 - Present Day

9 Curriculums Completed

DESIGN SPRINTS TAKE

4 TO 5 DAYS

with

6 TO 8 HOURS

OF ENGAGEMENT PER DAY

The Design Studio process is mutually beneficial. BSB and Nebraska programs gain high-quality curricula designed by students who are near-peers with the intended audience.



Simultaneously, participating high school and college students gain skills that better prepare them for their future education and career goals.

Students:

- ✿ Enjoy the process
- ✿ Become more interested in working in afterschool programs
- ✿ Feel a sense of pride over the materials they create



Access the Design Sprint Guide & Real studio examples

<https://beyondschoolbells.org/youth-voice/design-studio.html>



DESIGN STUDIO PARTICIPANT SURVEY SNAPSHOT

89% of participants felt this experience better prepared them for their future education/career goals

89% of participants said this was an “extremely good experience”

100% of participants agreed this experience increased their interest in working for afterschool programs in the future

100% of participants were proud of the outcome of the design studio.

“IT WAS A REALLY COOL EXPERIENCE, AND SOMETHING THAT HAS MADE ME EVEN MORE INTERESTED IN EDUCATION.

~ LAUREN MOTT, PARTICIPANT



VIDEOGRAPHY CLUBS

The purpose of the Youth Videography clubs/camps are to provide students with a set of videography and storytelling skills they hone by creating mini-documentaries of their afterschool programs. The goal is for program leaders to build videos and marketing materials together with their students that capture the magic of the program while elevating youth voice and helping students grow as videographers and storytellers.



Beyond School Bells partnered with The Bay via a Center of Excellence grant to develop the Youth Videography curriculum, create a supply list, and develop recruitment flyers. The Bay provided the location/space for programs to upload their videos.

The following sites were awarded funding to hold Youth Videography Clubs:



**BLUE VALLEY
COMMUNITY ACTION**

DATES: September 22- January 23

PARTICIPANTS: 11

**MADISON MIDDLE
SCHOOL**

DATES: October 22 - April 23

PARTICIPANTS: 11



**HAMILTON COUNTY
YOUTH CENTER**

DATES: May - August 23

PARTICIPANTS: 14

**ALLIANCE RECREATION
CENTER**

DATES: Beginning in February 2024

PARTICIPANTS: Promotional recruitment video in final stages



Videography club generally takes place across one semester. Clubs took place throughout the 2022-2023 school year, and one club met during the summer of 2023. Clubs met once per week and ranged in time from 30-120 minutes per session. One site met for 20 weeks and another for 6 weeks.

OUTCOMES

Overall, students felt they learned skills they may not have otherwise learned, had it not been for the opportunities offered through the club. Students reported feeling empowered by the time their video premiered.

Videos will be shown at one site with the goal of marketing the program and increasing enrollment. This site also hopes to improve family engagement and increase attendance at parent/caregiver events. Multiple sites have shown their videos at local movie theaters, where the public was invited to attend. Students shared feeling a lot of success when seeing positive audience reactions.



PROGRAM STRENGTHS

- ✿ The **design** of the club is a definite strength. Youth especially liked the training videos and found them helpful
- ✿ **Flexibility** is a huge strength of this project. Sites can decide how they want to implement programming and how youth voice will be elevated.
- ✿ This project has been most successful for programs who have **leaders** with the knowledge, skills and/or interest in videography. These programs have been able to take the supply lists and videos provided and use them as a jumping off point to be creative and try some new things.

FUTURE CONSIDERATIONS

- ✿ This is still an in-progress project. We will continue to learn what works best and how it can look different in each community.
- ✿ Understanding that the learning curve for students is significant and using this knowledge to set expectations.
- ✿ Connect with HS students who are already interested in videography to lead a club for younger students.
- ✿ Consider holding a videography club that meets at least twice a week.
- ✿ Collaborating with other clubs.

PHOTOVOICE

PROJECTS

Photovoice is a process by which people can identify, represent, and enhance their community through a specific photographic technique.* Photovoice has three main goals:

- 1 Enable people to record and reflect on a community's strengths and concerns
- 2 Promote critical dialogue and knowledge through large- and small-group discussion of photographs
- 3 Reach policymakers

In the afterschool space, Photovoice is a fun, creative way to engage students to share what they see in their program through their eyes. The more students are heard and involved with key decision making, the more they benefit as learners, leaders, and individuals.

In May of 2023, BSB offered support to three programs willing to pilot photovoice with their students. Sites were provided support and training for students from the Munroe-Meyer Institute. MMI staff regularly checked in with program staff and helped sites troubleshoot issues. MMI staff trained students on the Photovoice process, as well as ethical and safety guidelines.

ABOUT THE SITES



Where?

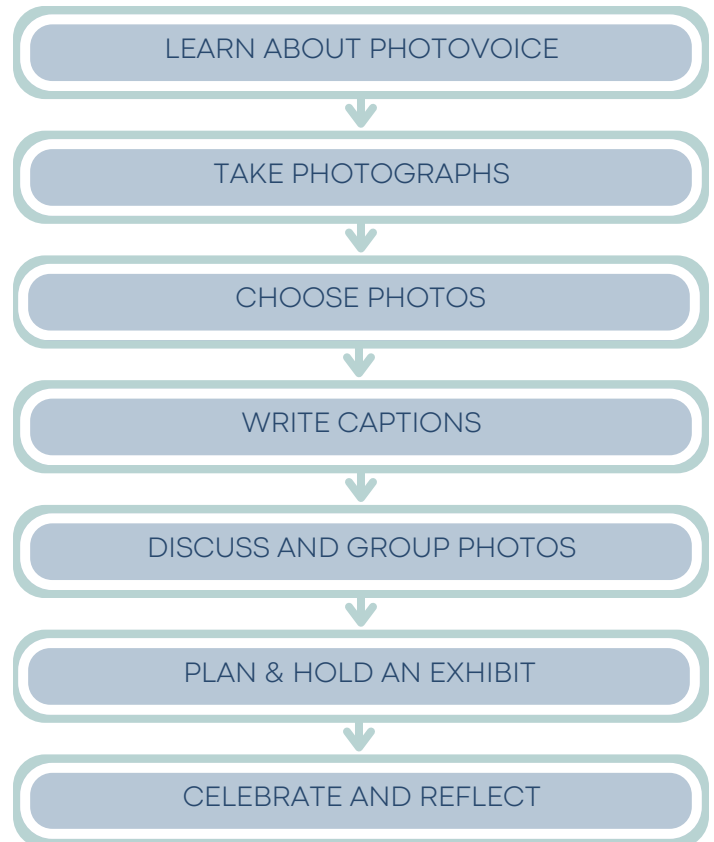
Super Kids Club,
Broken Bow

Arnold Elementary,
Lincoln

Umo^oho^o Nation



THE PHOTOVOICE PROCESS



** Photovoice is a participatory research method developed by Caroline Wang and Mary Ann Burris (1997).*

OUTCOMES

Arnold Elementary in Lincoln had an established photography club, with cameras already available to each student who participated. Students took their photos throughout the course of the program and captioned them. Then, MMI staff met with the students to categorize their photos. Arnold students identified themes about these aspects of their program:

- STAFF-STUDENT CONNECTIONS
- PEER RELATIONSHIPS
- PROGRAMMING
- FIELD TRIPS

It is important to note that the images and interpretations are from students' perspective. Photovoice shows what students see and how they interpret it during their time at their programs.

GUIDING QUESTIONS

- 1 *What makes you feel excited about coming to your summer program?*
- 2 *Is there anything that makes you feel bored or feel like you'd rather be somewhere else?*



"Decorating water bottles. I love watching my friends find stickers. It tells me about friendship."



"Us doing a craft. It shows boredom. It makes me bored just sitting there."



"Friend playing 4-square. They hit really high. It shows them having a moment. There's a lot of fun games."



FAMILY ENGAGEMENT



FAMILY ENGAGEMENT GRANTS

To facilitate family engagement (FE) in programs, BSB offers STEM FE grants. The grants build on what commonsense tells us and research supports that meaningfully engaging families leads to improved educational and life outcomes for youth. We further believe that engaging families with STEM in ELOs can lead to important social and economic outcomes that benefit local communities by using the informal out of school time learning space to show students and their families they belong in STEM, and that STEM is relevant to their everyday lives.

GRANT RESOURCES

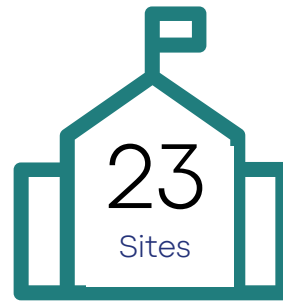
[STEM Family Engagement Planning Tool](#)

[STEM Family Engagement Workbook](#)

[Family Engagement: Make it About Empowerment Blog.](#)

Because we want to empower afterschool staff so they in turn can support the empowerment of parents and caregivers, the core component of the grant structure is staff professional development around STEM FE. The grants provide funds for learning-time and for team meetings with shared meals to work through the STEM Family

WHO WE SERVE



SITE TYPES

- 14 Elementary
- 6 Secondary
- 3 Community



67%

of grantees also received ESSER funds

10

RURAL

2

URBAN



\$41,848

Funds Awarded to Programs

Engagement Planning Tool created by Drs. P. J. Allen and G. G. Noam at the Institute for the Study of Resilience in Youth (ISRY) and Harvard Medical School, with support from the STEM Next Opportunity Fund.



BSB’s STEM Family Engagement Grants are designed to meet programs where they are and support initiatives and ideas that reflect each program’s unique capability and ingenuity. Applicants choose one of four grant tiers, which are tailored to suit the needs of their programs, including an option for novel ideas proposed by the grantee.

Grant Type	Awarded	Grant Length
Tier 1 (up to \$1,400)	4	1 semester
Tier 2 (up to \$3,500)	5	1 school year
Tier 3 (up to \$5,500)	1	1 school year
Summer Grant (up to \$1,500)	2	1 summer programming session

PROFESSIONAL DEVELOPMENT

Grantees typically held two to three professional development meetings to discuss the Family Engagement Toolkit and Workbook and reported the materials helped them develop intentional family engagement plans.

“The planning tool was designed very well, the staff seemed to follow the material well and found it very helpful in planning our STEM family engagement programming.”

“[Professional development meetings] assisted us in establishing clear goals and generating ideas to involve our community’s families. This event provided a chance for us to connect with these families.”

“It helped us to target families in the community who would benefit from the activity and engage in additional learning opportunities for their children.”



Grantees supported by BSB’s Family Engagement grants held more than 30 family engagement events.

OUTCOMES

Grantees were asked how the FE grants impacted their program. One hundred percent of respondents agreed or strongly agreed that the grants helped their programs on these key outcomes:

The PD meetings strengthened our ability to meaningfully engage families



The Planning Tool was helpful



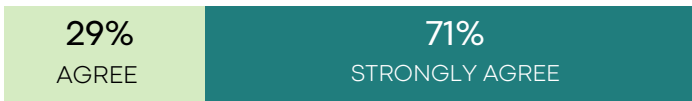
Our ability to engage more diverse families has increased



The quality of our family engagement events has improved



Our communication with families has improved



COMMUNITY-SPECIFIC NEEDS AND SOLUTIONS

One grantee reflected, *“It also made us aware that we have Spanish speaking families who would be involved if WE made the effort to include them.”*

Indeed, another grantee that used funds to support more cultural inclusion reported it was more likely to hear from their Spanish-speaking parents. As one of these parents said about their afterschool program, *“Todo esta muy bien. Mi hijo esta muy contento de asistir en este programa. Gracias por existir!!”*

“

Our students and parents were able to experience unique STEM activities together. The HallowSTEAM event was not only an amazing opportunity to engage families with STEAM activities, but was a wonderful learning and growth experience for our staff. The entire process of professional development meetings, planning, designing and implementation were showcased through this event. It also carried forward to other events in the fall... [and] it continued strong in the spring.

~ GRANTEE

”



FAMILY ENGAGEMENT GRANT IN ACTION: BROKEN BOW

Super Kids Club, Inc. received a Tier 1 STEM Family Engagement grant during the spring of 2023. To meet the professional development requirement of the grant, the Program Director held three staff meetings to review and discuss the STEM Family Engagement Planning Tool (Allen & Noam 2021). Tangible outcomes from the professional development included:

BROADENED COMMUNICATION WITH FAMILIES ACROSS TEAM MEMBERS

“ Staff is showing increased engagement in their jobs. They are actively evaluating how they can connect with families to encourage family engagement. **The PD component allowed staff members to plan out ideas on how to achieve family engagement outside of our events.** These daily, weekly and/or monthly ideas allow for family engagement opportunities without a large event. ”

STAFF EMPOWERMENT AND RELATED STRUCTURAL CHANGES

“ This grant sparked conversations between the site leadership team and site staff that shifted responsibilities for each role. Site staff wanted to communicate with families about their programs and experiences with students, which was not known by the site leadership team. **This revelation motivated site leadership to coach site staff on communicating with families and to start including a site communications agenda item at all staff meetings** so that site leadership and staff can work together to reach families each month. ”

SHIFT FROM FAMILIES ATTENDING EVENTS TO FAMILIES ENGAGING AT EVENTS

“ Family feedback of increased involvement: As teams were assigned an activity and date the event would be held, they built event activities in more creative and engaging ways. This allowed our **family events** to become **family engagement events.** **Families expressed feeling more involved in the event and the program** with the changes teams made to the events in the PD meetings. ”



(2021). *STEM Family Engagement: A Planning Tool*. Institute for the Study of Resilience in Youth (ISRY). https://stemnext.org/wp-content/uploads/2021/10/STEM-Family-Engagement-Planning-Tool_Oct2021.pdf [stemnext.org]

STEM FAMILY ENGAGEMENT BACKPACKS

PROJECT SUMMARY

In partnership with NE 4-H Extension, Beyond School Bells helps families connect through fun and engaging STEM learning through our take home STEM backpacks. Each backpack includes books and materials needed to complete a creative, hands-on, STEM learning activity as a family. They provide a fun and engaging way for afterschool programs, libraries, and Extension educators to connect with families. Beyond School Bells offers grants for afterschool programs and some other informal educators to purchase sets of backpacks for families to check out.

Informal educators select the backpacks that best fit their program goals and needs. Extension provides coaching for educators and staff that includes lesson

Number of Lessons



12 lessons have been piloted, refined, and distributed



8 additional lessons currently in pilot phase with families include astronomy, photosynthesis, and electricity

Lessons topics include pollinators, DNA, robotics, engineering, and more. For a full list of backpack activities visit: <https://beyondschoolbells.org/resources/take-home-stem-backpacks.html>

instructions, check-in and check-out system guidance, and continued access to training materials. Books and instructions for backpacks are available in both English and Spanish and pictorial instructions are currently being created to increase access.

STEM Backpacks and Unite for Literacy

Unite for Literacy joined the STEM backpack partnership over the summer of 2023 to conduct writer's workshops with Extension STEM CARES college students. **Eleven books were written by eight authors for backpack activities.** Each book was digitally published on a [Unite for Literacy bookshelf](#) specifically designed for the backpacks. Unite for Literacy donated 200 books to distribute with the backpacks for families to keep after completing STEM activities together.



NUMBER OF BACKPACKS DISTRIBUTED



BSB granted sets of 12 to ELO programs in Lexington, Crete, and Alliance. Crete purchased an additional set to enhance learning around their pollinator garden.



BSB and Extension partnered with the National Center for Families Learning (NCFL) to distribute 18 sets of 12 backpacks through NCFL partner programs.



STEM Backpacks were created in the summer of 2023 for distribution to TMC Labs as supplemental TMC activities families can continue learning with at home.

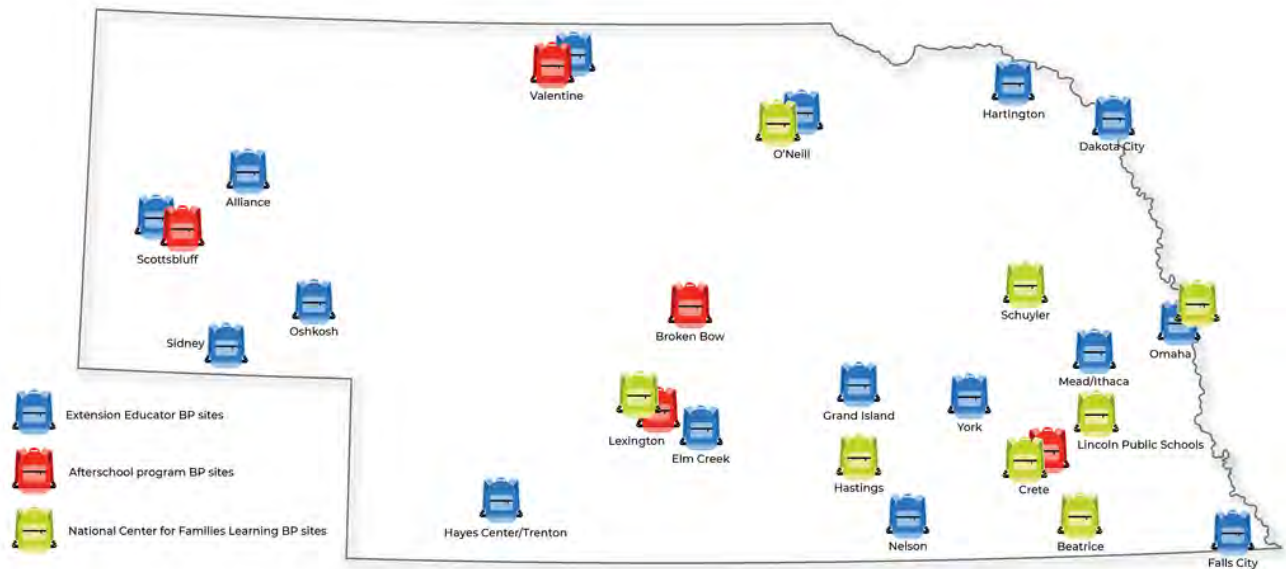


NE 4-H Extension distributed sets of backpacks to Extension County offices in rural communities throughout the state.



Beyond School Bells shared the STEM backpack lessons with Missouri 4-H Extension. Missouri 4-H distributed NE-designed backpack lessons in Missouri and created 5 additional lessons they shared with Nebraska.

STEM BACKPACK DISTRIBUTION ACROSS NEBRASKA

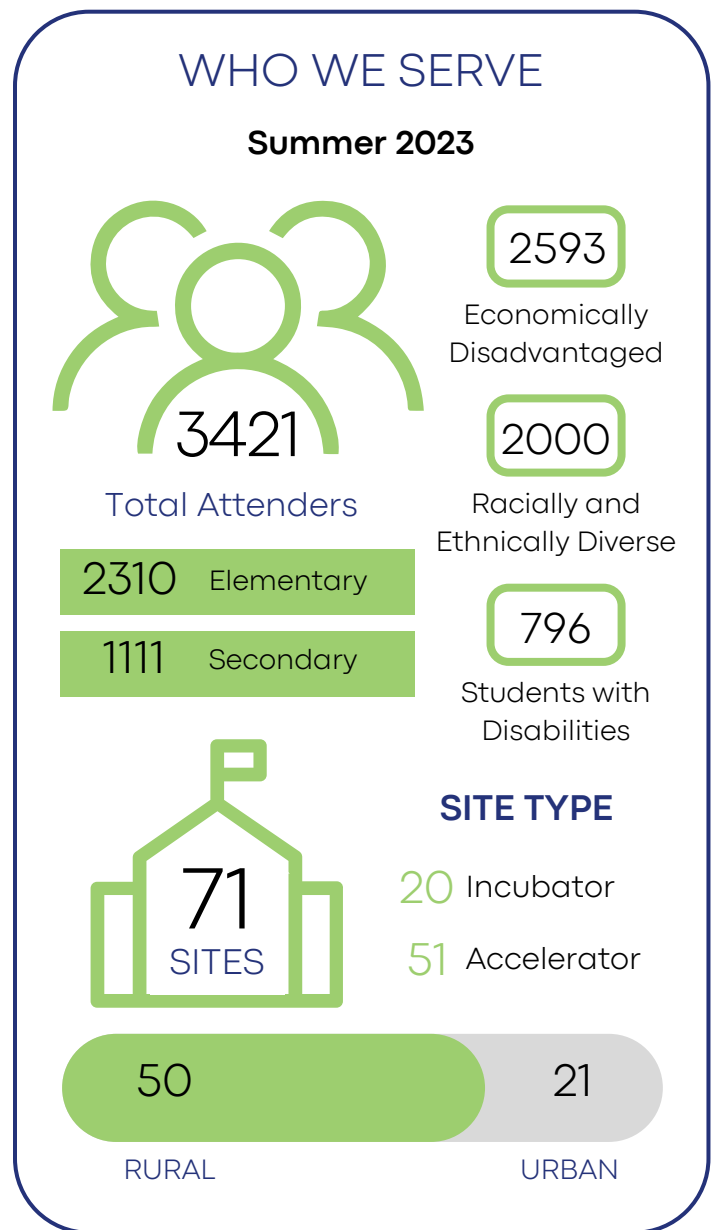
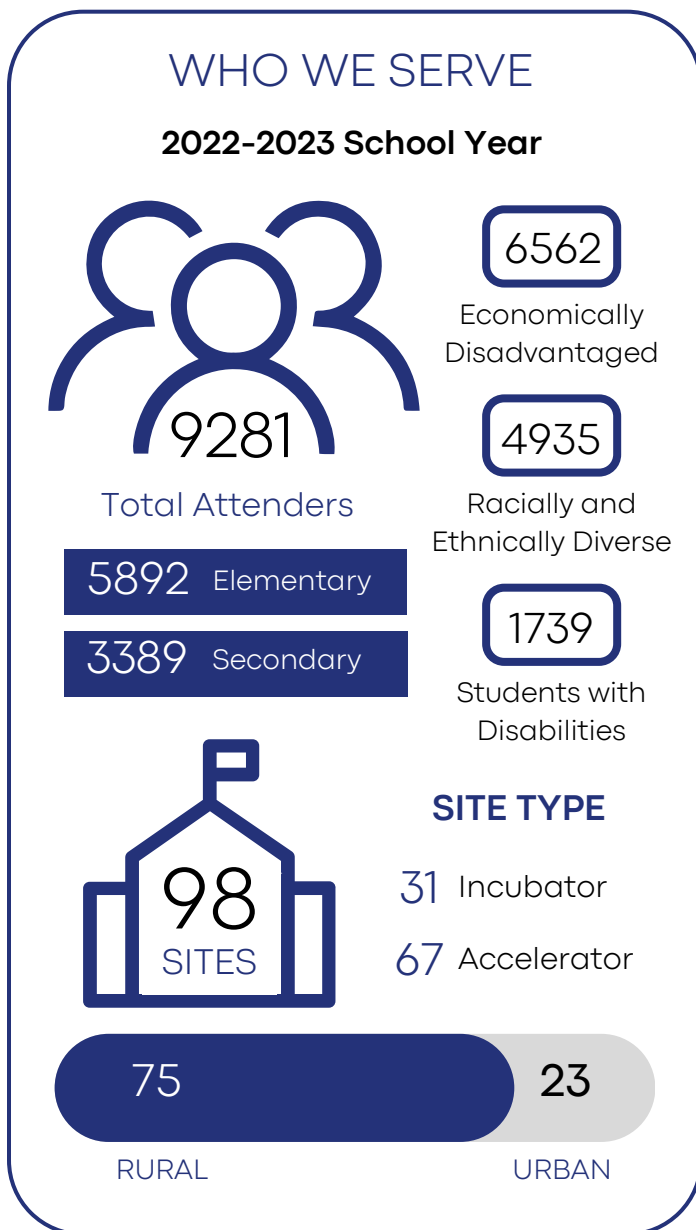


February 2024



ESSER III

In May 2021, the State Board approved the creation of the ESSER Collaborative ELO in collaboration with Beyond School Bells (BSB) for the distribution and administration of the ESSER III program summer and expanded learning activities allocations, which totaled approximately \$11 million. The NE Department of Education (NDE) serves as the fiscal agent of these grants and BSB provides grant management and administration. ESSER III-funded programming began in the summer of 2022 and will continue through September 2024.



NUMBER OF DISTRICTS BY CATEGORY

14

Districts with Incubator sites: Newly developed programs and/or sites that do not receive 21st Century Community Learning Center funds.

16

Districts with Accelerator sites: Established programs and/or sites that receive 21st Century Community Learning Center funds in addition to ESSER.

5

Combination districts with Accelerator and Incubator programs: A combination of established sites and newly developed sites.

School identification & achievement data

COVID-19 impact

Community social vulnerability index

ESSER III SITE IDENTIFICATION

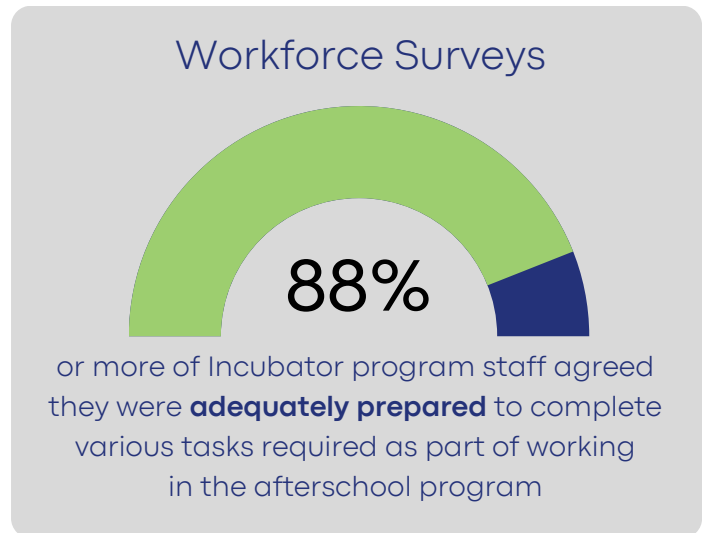
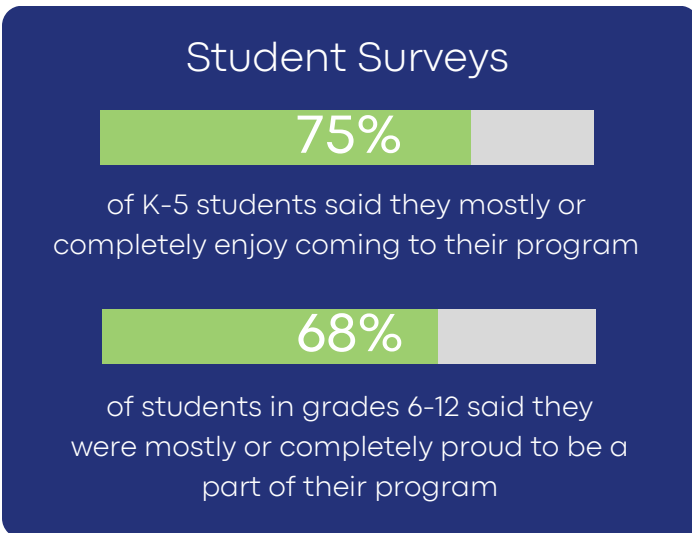
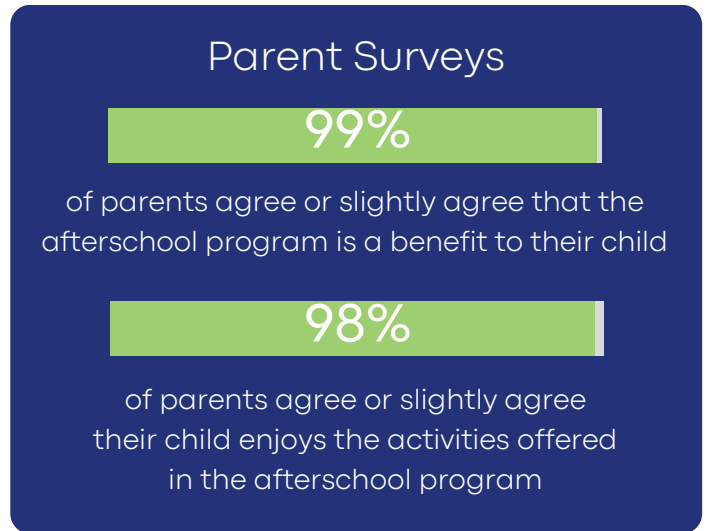
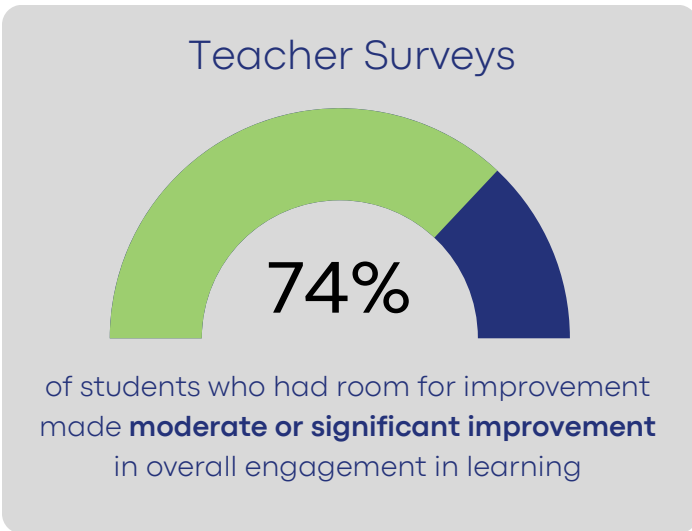
To identify highly impacted communities and sites, the NDE triangulated school identification (e.g., CSI, TSI, ATSI) and achievement data, COVID-19 impact, and measures of a community's ability to respond to crisis (social vulnerability index). Sites include schools with pre-existing after-school and summer school programs, and support to build new sites. Selected communities are considered Incubators, Accelerators, or Accelerators with an Incubator site.

ESSER COLLABORATIVE ELO FUNDS SUPPORTED SITES IN 35 NEBRASKA COMMUNITIES DURING THE 2022-2023 SCHOOL YEAR



OUTCOMES

Program impact was measured with student, parent, and teacher surveys. Surveys assessed student and parent satisfaction with the programs, teacher-perceived student growth, and staff preparedness. Results below are for the 5,023 teacher, 3,418 parent, and 3,456 student surveys from Incubator and Accelerator sites. Workforce data reflect responses from 89 staff members working at Incubator sites.



“ I bought candles from [Student] and she was very proud of the entrepreneurship aspect of the after school program. ”
~School day teacher



PARENT FEEDBACK

“My daughter is engaged in activities that provide additional opportunities to learn in a fun and safe environment.”

“Everything from the program has been great, couldn't ask for it to be better.”

“La experiencia que eh tenido en este programa es extraordinario”

“The additional enrichment the program currently offers for my child is amazing! I deeply appreciate the staff taking the time after school to provide this program for my child. The time not spent at daycare is also a large financial burden removed from our family which is another deeply appreciated aspect of this program.”

“Me parece que les ayuda en su desempeño y uno como padre les ayuda en reforzar su confianza y en el respeto hacia los demas y en las dudas que ellos tengan.”



“Love that he gets to do some really fun activities and play that also help him learn at the same time.”

“Moving to Nebraska from another state, I can't tell you how blessed my family was to be a part of this afterschool program. In the past I could not afford the social program as a single parent limiting my daughters exposure and opportunity. This program breaks the barriers, income and resource posed to give my child an opportunity to grow and have fun. Thank you.”

STATEWIDE PROFESSIONAL DEVELOPMENT & TRAININGS

In October 2023, BSB launched a series of quarterly regional professional development (PD) trainings that cover important core afterschool areas, including:

- ✿ The essentials of running ELO programs
- ✿ Fostering identity and purpose for youth
- ✿ Building partnerships for sustainability

Each meeting was tailored to the attendees, going deeper into sustainability and funding where attendees were mostly Program Directors and adjusting the depth of topics when attendees were primarily Site Coordinators. The meetings resonated with participants, some of which very successfully

networked and continued to network and build relationships between their programs with additional independently organized meetings. Looking ahead, the regional connections will continue with:

- ✿ Regional Zoom meetings
- ✿ Sustainability video series available on BSB website
- ✿ Sustainability “Lunch & Learns” and workshops
- ✿ Quarterly Regional Connection meetings to serve partners across the state

Regional Meetings

3 meetings have been held in Norfolk, Alliance, and Crete

13 different programs were represented by attendees



CONFERENCES

BSB continues to partner with NDE's 21st Century Community Learning Centers and NE Extension on the **GetConnected Conference**, which took place in September 2023 in Kearney. **Almost 425 attendees participated in person or virtually in the one-day conference.** GetConnected provides opportunities for attendees to network and share best practices and is followed with a regular series of StayConnected Webinars on topics of emerging interest to ELO educators from around the state.

Building on this partnership, **we launched the first Nebraska ELO Innovation Invitational** in the spring of 2023, an opportunity for practitioners from around the state to share best innovations and learn from one another in a more informal, workshop format. This three-day conference, held at NE Innovation Campus, included 275 in person participants from across Nebraska and the Midwest and included keynotes on Innovation, Cultivating Purpose and the importance of building Hope through ELO programs.

We followed the Innovation Invitational with a series of summer conversations, which began in May with former Illinois Superintendent of Education Tony Smith,

INNOVATION INVITATIONAL

March 7-9, 2023

UNL Innovation Campus

275 In-Person Attendees

64 Hands-on Workshops and Breakout Sessions

1 Youth Voice Dinner and Reception

4 Keynote Addresses

Innovations in ELO – Mindsets and Practices:
Dr. Tony Smith, Whyspeople

Cultivating Youth Purpose:
Dr. Anthony Burrow, Cornell University

How to Build Hope: Dr. Tim Hodges,
Gallup Strengths Institute, UNL

Building Back Better: Building the ELO Programs Youth Deserve – and We All Need: Dr. Tony Smith, Whyspeople

who encouraged participants to use ELO programs as the Research and Development space that can power youth-centered education reform efforts. Conversation topics included cultivating youth purpose and identity, and strategies for re-engaging boys in learning.



READY, STEM, GO! CONFERENCE

The 2023 Ready, STEM, Go! virtual conference was a free, two-day conference hosted March 14-15 as a collaborative effort between Beyond School Bells and six other Statewide Afterschool Networks. The conference, attended by over 160 afterschool professionals and advocates, was funded and supported by STEM Next Opportunity Fund and the Million Girls

Moonshot Initiative. The conference consisted of 11 breakout sessions and 4 keynote speakers on important topics such as promoting equity in out-of-school time (OST) STEM, encouraging an engineering mindset, and introducing STEM careers to students in OST, and including Amanda Gutierrez, Nebraska's 2022 Million Girls Flight Crew Representative.

NATIONAL REACH



NATIONAL PARTNERSHIPS

Beyond School Bells, while Nebraska’s statewide afterschool and summer learning network, partners with multiple prominent national organizations that provide support for our work and avenues from which we regularly

collaborate on national initiatives and projects. Some of our national partnerships include the C. S. Mott Foundation’s 50-State Afterschool Network (Mott), the Afterschool Alliance, and the STEM Next Foundation.

Charles Stewart Mott Foundation

The C. S. Mott Foundation’s 50-State Afterschool Network is a national initiative supporting and convening state-level networks working to build high-quality out of school time programs for youth in every state across the country. BSB has partnered with the Mott Foundation for 20 years and benefits tremendously from this national connection in many ways, including:

- ✿ Utilizing Mott-funded research into the effectiveness of afterschool programs
- ✿ Networking with other states to share successes and lessons learned
- ✿ Opportunities to experiment with promising practices we adapt to fit Nebraska’s unique contours

Examples of our collaborated project areas include recent and ongoing work around entrepreneurship, college and career readiness, service learning, and other programming innovations.

Afterschool Alliance

BSB is a longtime partner of the Afterschool Alliance, a Washington D.C.-based non-profit that works with a broad range of organizations and supporters aimed at engaging public will to increase public and private investment in afterschool program initiatives at the national, state, and local levels. This partnership provides BSB with:

- ✿ Afterschool marketing materials used across the 50 states
- ✿ Best practices including a toolkit for engaging policymakers
- ✿ Multiple forms of data driven analysis including national research reports, briefs, and policy updates
- ✿ Investigation of education credit for OST learning opportunities in NE



STEM Next Opportunity Fund

Our work supporting expansion of STEM programming in Expanded Learning Opportunities (ELO) programs across Nebraska is greatly enhanced by our partnership with another national non-profit, the San Diego-based STEM Next Foundation. Through our multi-year partnership with STEM Next, and its predecessor the Noyce Foundation, we have been able to bring national best practices in afterschool STEM programming to Nebraska.

Through our participation in STEM Next's signature Million Girls Moonshot initiative, we've provided more underserved youth with opportunities for hands-on, engaging, locally relevant STEM activities crucial in preparing youth for careers in rapidly expanding STEM sectors.



SUCCESSSES

Our collaboration with these foundations and organizations also allows BSB to share our successes across state lines.

One prominent success has been the Think Make Create (TMC) Labs, which has grown from a pilot project in Kearney in 2015 to an initiative now reaching thousands of youth in Nebraska, Idaho, South Dakota, and Louisiana, with New Mexico and Georgia poised to join the ranks later in 2024. This growing TMC

Labs community is turning out to be a prime example of mutual benefits that come from sharing ideas and best practices amongst like-minded groups.

Another example of the benefits of national partnerships is our work as part of a learning community focused on STEM family engagement, where national research on best practices informed our practices which, in turn, have shaped our understandings about how to best engage parents in supporting their children's STEM learning journey.

TMC LABS

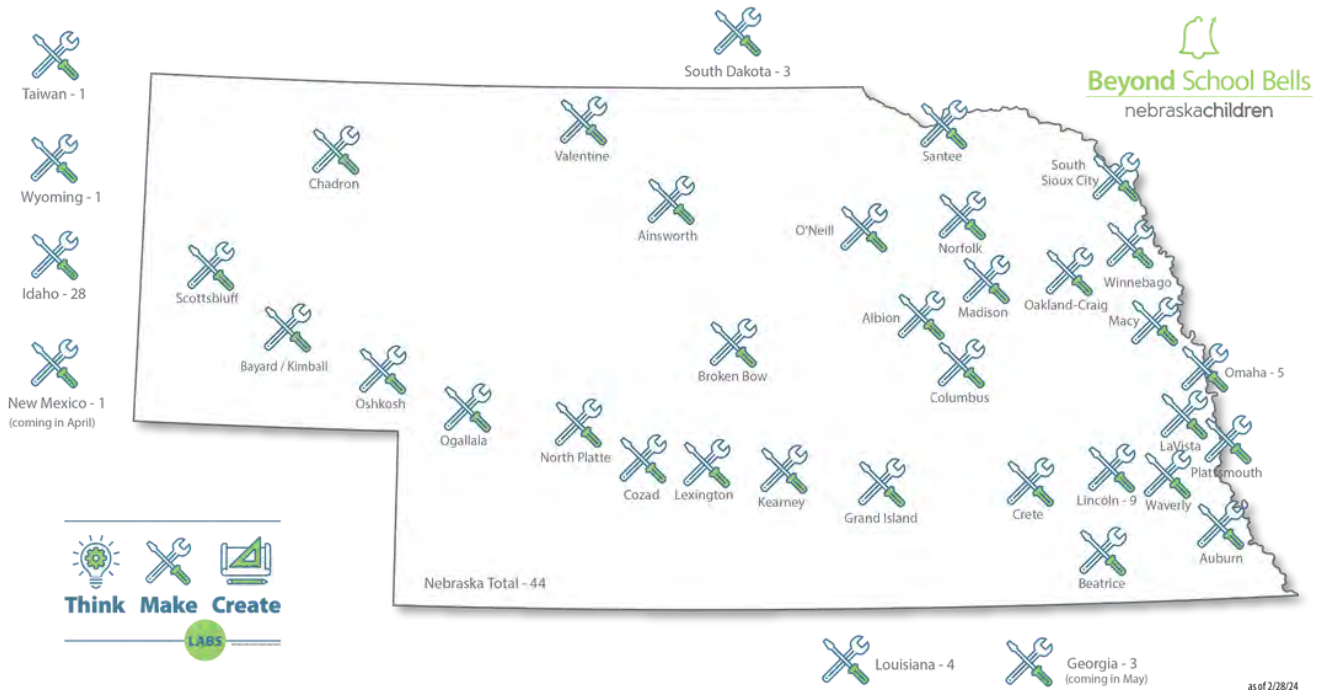
The Think Make Create (TMC) Lab is a project of Beyond School Bells, and the first product of the ELO Innovation Network. The "Lab" is a converted 7x12 foot trailer that can easily be transported to ELO program sites and community-based learning sites. The TMC Lab provides afterschool programs with a tool they can use to enhance existing programming via a mobile platform for hands-on learning.

Tinkering and making can occur either outside of the trailer, utilizing TMC tables and pop-up canopies, or inside the school. TMC Labs are designed to be a low-cost entry point for Nebraska youth to tinker, explore and problem-solve

while helping to promote long-term sustainability for rural ELO programs.

From an initial hand-built prototype in Kearney, the **TMC Lab has grown to 43 units across Nebraska** and has expanded both nationally and internationally including one in Taiwan and 33 in four other states, including Louisiana, Idaho, South Dakota, and, later in 2024, Georgia and New Mexico.

Beyond School Bells hopes to engage partners across the state and country to develop innovative new programming strands that will enhance both the TMC Lab platform and the sustainability of high-quality ELO programs in communities across Nebraska and the nation over the next few years.





TMCs Supporting Rural Economic Development

Beyond School Bells is excited about the opportunity to expand our TMC program to support STEM + Entrepreneurship training via a pilot project in select greater Nebraska communities.

Ideally, high school leaders would be matched with a local STEM business in an internship to gain additional understanding of how STEM proficiency will power future economic development opportunities in their hometowns.

Makerspace Playbook
monthly TMC newsletter

For TMC partner spotlights,
activity ideas, and cross state
collaborations, visit
[https://beyondschoolbells.org/
mobile-maker-space/tmc-
newsletters.html](https://beyondschoolbells.org/mobile-maker-space/tmc-newsletters.html)



MILLION GIRLS MOONSHOT (MGM)

The Million Girls Moonshot (MGM) is a national initiative launched by one of Beyond School Bells’ national partners, the STEM Next Opportunity Fund. The MGM seeks to re-imagine:



WHO CAN ENGINEER



WHO CAN BUILD



WHO CAN MAKE

The MGM aims to inspire and prepare the next generation of innovators by engaging a million girls and underserved students in STEM learning opportunities through afterschool and summer programs. BSB has been a part of this initiative over the past four years by working to engage this population across the state of Nebraska.

“

EVERY SINGLE YEAR MY INTEREST FOR STEM HAS INCREASED, AND THIS PASSION HAS SHAPED ME AS THE PERSON I AM TODAY.

~ MACKENZIE G., 9TH GRADE
Quote provided by STEM Next

”

The following sections highlight the BSB-lead projects related to the MGM initiative:



LEARNING TRANSITIONS RESEARCH PROJECT

The Connected Learning Lab at the University of California-Irvine selected five state networks to participate in a national research project with a focus on how to build learning connections across settings for middle school girls. BSB was one of the five networks selected, and has since formed a near-peer model of connected learning that is available for other statewide afterschool networks to learn from and replicate. This work also provided a foundation for BSB’ Engineering Pathway project, which focuses on building elementary to high school engineering-based learning pathways in rural communities that utilize the near-peer model.



MGM ADVISORY BOARD

The purpose of BSB's MGM Advisory Board is to develop short- and long-term strategic planning, build a diverse network of STEM role models, mentorship and family engagement opportunities, and increase public and private sector advocacy and financial champions to support girls and underserved students in STEM across the state. The Board consists of women and male advocates from STEM-rich businesses and organizations across Nebraska, including representatives from:


- ✿ The Kiewit Luminarium
- ✿ NE Women in STEM
- ✿ Nebraska Cures and Bio Nebraska
- ✿ Lozier and Behlen Manufacturing
- ✿ NE Public Power District
- ✿ Lincoln & Omaha STEM Ecosystems




The MGM board made several notable achievements throughout the 2023-2024 year, including convening legislative events, successful networking, site visit, and partnership activities, and co-presentation at multiple conferences.

INDIGENOUS COMMUNITY PARTNERSHIPS

To address food insecurity by empowering young people in high technology food systems programming and learning, Beyond School Bells has developed partnerships with Native communities in NE. This work includes:

 A Summer of Youth grant to expand a 6,000 sq. foot garden with a FarmBot and Grow Tower in Walthill. The Walthill afterschool program is also participating in a National Geographic supported project (Grow NE), where high school students are being paid to run food systems programming, while collaborating with students across clubs to address environmental challenge.

 Support for high school students to run food systems programming in Winnebago, Macy, South Sioux City, and Isanti that includes garden expansions and high-tech food sustainability engagement.

POLICY WORK

In addition to supporting Nebraska’s ELO programs with programming innovations and financial resources, BSB also works at both the state level and with local communities to help educate adults about the importance of afterschool and summer learning with an eye toward creating local and state policy to support and sustain this critical work. Some examples of these efforts include:



Hosting annual ELO Awareness weeks at the State Capitol where information about afterschool programs is set up in the Rotunda.



Facilitation of State Senator and rural afterschool program staff meetings to give program staff the opportunity to educate members of the legislature about their programs, which meet important youth, family, and community needs in their districts.



Cosponsoring special events for elected officials at the Capitol, like the Women in STEM luncheon, designed to elevate specific examples of the power of afterschool and summer learning programs to address priority needs in NE.



Sharing national messaging and resources from partners like the Afterschool Alliance with NE program staff to support efforts to educate local officials.



Providing communities with information and resources to educate elected officials and advocates in their communities about the local impact of afterschool and summer programs.

LIGHTS ON AFTERSCHOOL

A key national public awareness campaign, Lights On Afterschool (LOA), organized annually by our partners at the Afterschool Alliance, provides messaging and resources we share with Nebraska afterschool programs that can be used to educate local officials. Alongside this national celebration, BSB initiates annual Governor’s Proclamations proclaiming a day in October as Nebraska’s official Lights On Afterschool Day. In addition, we provide grant support to rural programs for their own local LOA celebration events where key stakeholders from their communities are invited into their programs for fun events built around sharing, raising awareness of the power of afterschool, and celebration. Parallel to supporting our program partner’s local efforts, we also provide state level outreach messaging, such as editorials around LOA.



PHILANTHROPIC PARTNERS

In closing, our work at Beyond School Bells, to expand the promise of the Good Life to more Nebraska youth, would not be possible without the generous and sustained contribution from Nebraska’s philanthropic sector. Nebraska is blessed to have a uniquely generous collection of individuals and families committed to sharing their good fortune with those who lack access to the resources necessary to explore, as Somerset Maugham’s quote so poignantly captures, all of life’s wonderful possibilities.

Beyond School Bells has established long-term partnerships with many Nebraska philanthropies empowering us to pursue our mission to support state and local level efforts to expand access to high quality, cost-effective and locally sustainable Expanded Learning Opportunity programs.

Through robust investments from Nebraska’s philanthropic sector, which

we leverage with public sector resources described elsewhere in this annual report, we provide grants, programming and technical assistance to underserved communities across our state.

In 2022-23, we want to specifically call out the following Nebraska philanthropies for their generous long-term support and partnership:

- THE ROBERT B DAUGHERTY FOUNDATION
- THE HOLLAND FOUNDATION
- THE CLAIRE M HUBBARD FOUNDATION
- PETER KIEWIT FOUNDATION
- WILLIAM AND RUTH SCOTT FAMILY FOUNDATION
- THE SHERWOOD FOUNDATION

We are very grateful to all that you do to help make Nebraska a welcoming, supportive place to call home.

“

Money is like a sixth sense without which you cannot make a complete use of the other five. Without an adequate income half the possibilities of life are shut off.

~ W. Somerset Maugham, Of Human Bondage

”



SUMMARY AND LOOKING AHEAD



LESSONS LEARNED: CHALLENGES & SUCCESSSES

Each community and organization experienced a dynamic mix of both challenges and successes throughout the planning, development, and execution of their programs while working to provide youth with new learning opportunities. Many sites shared what they learned throughout the year in regard to what worked well for their programs and what needs still remain for the youth in their communities.

STAFFING

Across the state, program staffing concerns remained a key issue for almost all programs. There has been an unprecedented increase in staff turnover and missing work due to sickness and other career opportunities in a tight job market, leading to full-time staff being overextended and reduced site capacity to take on new program strands.

One strategy used to meet this challenge was the launch of new partnerships with UNL Honors, STEM 4 U, UNL Extension, and Central Plains Center for Services to utilize DHHS CARES Act capacity-building grants that placed college students in ELO programs as paid staff.

BSB also continues to support these innovative staffing options by providing funding for high school (HS) and college student staff in our BSB Partners grant packages and providing resources and professional development around hiring and training HS and college staff.



BSB is partnering with the Nebraska State Education Association's Retired Teachers division to put a call out to retired teachers via our newsletter and other communication channels inviting them to reach out to their local afterschool programs or to BSB to get connected as staff or volunteers.

SUSTAINABILITY

Programs continue to be concerned with ELO programming uncertainty. Even when funding is available, such as through new federal programs, they are rightly concerned about boom-and-bust cycles that make planning challenging. However, increased awareness of the importance of afterschool and summer programs has strengthened the relationship between local initiatives and districts' goals, a key factor in long-term sustainability for these initiatives. To address the challenge of sustainability:

For the new incubator ELOs we are supporting through ESSER III funding, we're continuing to build layered coaching and training around partnership development and sustainability that includes workshops at fall and spring conferences, quarterly regional in-person PD meetings, monthly online meetings, and a sustainability workbook in our free online Toolkit.

We are prioritizing Incubator programs for our Leverage Grants, which are designed to provide a sustainability steppingstone for programs after the ESSER III grant period ends. This will continue to be a central priority in 2024 and beyond.

BSB Partners grants provide funding to our established partner programs for building community support, forming local partnerships, and raising ELO awareness.

PARENT ENGAGEMENT

Parent engagement has always been a strength of ELO programs. During the pandemic, programs lost opportunities for face-to-face time with parents. Almost all of the programs we work with expressed a need to 1) re-normalize relationships as they returned to regular programming, and 2) pick up routines with face-to-face contact and daily conversations.

BSB's STEM-based family engagement grants provide a reason to invite families back into the building, and we continue to provide funds for family events with nearly all of the projects we support. This will continue to be a priority moving forward.



PROGRAM CAPACITY AND SPENDING

While families express high demand for ELO programs and students need them more than ever, programs struggled to capitalize on a large influx of funds and programming opportunities while facing the challenges of being short-staffed. Following the tsunami of federal pandemic relief funds, the absorption challenges new programs faced included balancing individual staff workloads and hours worked per week to avoid burnout and managing multiple funding streams with different timelines and reporting requirements.

BSB addressed these challenges by providing innovative project ideas, multiple strands of TA support, and grant compliance guidance in the form of documents, online webinars, individual calls and other communications.

CONCLUSION

Despite these challenges, BSB support has remained strong and even grown in unprecedented ways during and after the pandemic, bringing with it many opportunities that BSB has turned into innovative and transformative programming options through the ELO Innovation Network and other core programming strands.



Our challenge continues to be in balancing our growth and potential with the fact that program staff in communities across the state are often overextended. Because of this reality, we must be thoughtful and strategic with timing of rollouts and always cognizant of our community partners bandwidth. BSB is addressing these challenges by working to closely align our innovations with the needs of our program sites and to meet programs where they are by creating ELO opportunities that are flexible, durable, and worthwhile for programs, students, and families.


FUTURE PLANS

Beyond School Bells is very excited about the future of afterschool and summer programming in Nebraska. We are in a strong position to support programs meeting youth, family, and community needs across the state.

Through our role coordinating the Nebraska Department of Education’s ELO Innovation Network, we will help communities look beyond the horizon and grow and enhance programming that will excite, engage, and inspire youth. In 2024, we will prioritize programs and initiatives like:



Integrating entrepreneurship and high-tech gardening programming to help spark the next generation of ag entrepreneurs.



Offering hands-on learning experiences that allow youth to imagine their future careers such as employing high school students as engineering club leaders and facilitating exploration of STEM career fields.



Empowering youth with innovative activities that challenge them to engineer their town’s future or experiment with hands on service-learning projects to meet needs they identify in their communities.



YOUTH VOICE

We're excited to continue to help elevate youth voice in shaping the future of afterschool in Nebraska. Our Environmental-Conservation Action Program is a collection of projects that reflect longstanding youth interest in environmental and outdoor activities. Via our Youth Leadership Council and innovative youth voice data collection projects, we will continue providing new programming and supporting practices that make afterschool an even more attractive place for NE youth.

INNOVATIVE WORKFORCE PROGRAMMING

Over the next year, in addition to supporting on-going activities through investments in these areas, we will be testing new approaches to help youth explore issues related to **energy independence, high-tech food production and sustainability, and other innovative, career sector-based topics.**

COACHING AND PROFESSIONAL DEVELOPMENT

Building on the lessons we learned supporting the expansion of afterschool and summer programs following the COVID pandemic, BSB is better positioned to provide more Nebraska communities with the professional



guidance and technical assistance they need to develop and operate the highest quality programs meeting the needs of youth and families.

Through partnerships with the Nebraska Department of Education, the Department of Health and Human Services and our private partners, 2024 will see us getting more involved in **supporting communities through regional meetings, regular online state-wide networking and learning communities, and individual on- and off-site coaching.**

As we look to the future, we know that afterschool can and must be part of new approaches to education that provide Nebraska's children, families and communities with the supports they must have to grow and develop into the productive job holders our economy needs, and the well-rounded, well-prepared citizens our democracy demands.

APPENDIX



Program Partners

Chadron Public Schools

- Beyond School Bells
- Chadron High School FCCLA
- Chadron State College
- Chadron State Park
- Crestview Care Center
- F.A.S.T. Families and Students Together, Chrissy Slingsby
- Fossil Finders Museum
- Jewel Cave National Park
- Kaci Swinney, School Partner
- Kadence Wild, School Partner
- Kara DeCrocker, School Partner
- Keep Chadron Beautiful
- Kim Hamar, School Partner
- Lauren Collins, School Partner
- Michael Anderson, NE Forest Service
- Myra Gehrig, School Partner
- NE Forest Service
- NE Game and Parks
- The Mammoth Site
- NE Extension, Dawes County

Columbus Public Schools

- 1C Church
- Columbus Community Hospital
- Columbus Public School
- Future Kids
- Girl Scouts
- Methodist Outreach Center
- Nebraska Children and Families Foundation
- NE Extension, Platte County
- Trinity Lutheran Church
- United Way
- Youth and Families for Christ

Crete Public Schools

- Beyond School Bells
- Civic Nebraska
- Crete Police Department
- Crete Public Library
- Crete Public Schools
- Crete Volunteer Fire & Rescue
- Doane University
- Frew Farms
- Future Kids
- Holiday Express Busing Company
- NE Extension, Saline County
- Nebraska Tourism Commission
- Nebraska Writers Collective
- Omaha Zoo Foundation
- Pinnacle Bank
- POYDS Dance Company
- R2K Photography
- Smithfield Foods
- Speedway Motors Museum of American Speed
- Spring Creek Prairie Audubon Center
- The Lied Center for Performing Arts

Fremont Public Schools

- Coalition RX
- NE Extension, Dodge County
- Fremont YMCA
- Future Kids
- Keene Memorial Library
- Summer Lunch Program

Kearney Public Schools

- Christine's Horseback Riding
- Cub Scouts
- Future Kids
- Girl Scouts

- Hy-Vee
- Kearney Area Chamber
- Kearney Area Children's Museum
- Kearney Farmer's Market
- Kearney Parks & Rec
- Kearney Public Library
- Kearney YMCA
- NE Extension, Buffalo County
- Rowe Sanctuary
- UNK

Lexington Public Schools

- Banisters Academy
- Beyond School Bells
- Dawson County Children's Museum
- Farm Bureau
- Future Kids
- Girl Scouts
- Keep Lexington Beautiful
- Lexington Family Aquatic Center
- Lexington Majestic Theatre
- Lexington Public Library
- Lutheran Family Services
- United by Culture Media
- Nebraska Extension, Dawson County
- YMCA

Norfolk Public Schools

- A to Z Vac n Sew
- Beyond School Bells
- Boy Scouts of America
- Golden West Supply Co.
- King's Lanes
- Northeast Community College
- YMCA



North Platte

Public Schools

- Beyond School Bells
- Dusty Trails LLC.
- Future Kids Soccer
- Keep North Platte Lincoln County Beautiful
- MPCC Basketball Team
- MPCC Girls Basketball team
- MPCC Rodeo Team
- MPCC Service Learning Project
- NE Extension, Lincoln County
- Nebraska Farm Bureau
- Nebraska Game & Parks
- NP Canteen District
- NP Community Playhouse
- NP Public Library
- NP Rec Center
- NPCC Service Learning Project, Courtney Johnston
- NPPS Foundation/ Homework Club
- Prairie Arts Center
- Rock'N Paws Therapy Dogs
- SEL, Jacquie Yenni
- SEL, Sammi Byrns
- Skills USA, NPHS
- Sodexo
- The Congur Family
- UNL Extension, Brenda Aufdenkamp (Healthy Lifestyles)
- UNL Extension, Caitlyn Jacobson (Project Wild)
- Walmart
- West Central District Health, Trudy Merritt

Oakland Craig Public Schools

- Alana Pearson
- Angie Bittner



- Brooke Peterson
- Brooke Temple
- Dakota Staggs
- Dawn Anderson
- Future Kids
- Jordan Luxa
- Julie Boyle
- Justin Rayburn
- Karl Lundquist
- Lisa Palmer
- NE Extension, Anne O'Conner
- NE Extension, Hannah Guenther
- Oakland Public Library
- Paige Peterson
- Stacey Keys
- Susan Skinner

Schuyler Community Schools

- Future Kids
- Girl Scouts
- Medicine Man Pharmacy
- NE Extension, KateLynn Ness (4-H)

- Pinnacle Bank
- Public Library
- Schuyler Chamber of Commerce
- Schuyler Courthouse
- Schuyler Fire Dept.
- Schuyler Museum
- Schuyler Police Dept.
- Schuyler Sheriff's Dept.

York Public Schools

- Beyond School Bells
- Boy Scouts
- Edgerton Explorit Center
- Kilgore Memorial Library
- NE Game and Parks
- NE Extension, York County
- Wessels Farms
- York Children's Museum
- York College Athletics
- York FFA Animal Lab
- York Kilgore Memorial Library
- York Parks & Rec
- York University
- Yorkshire Theatre



DESIGN STUDIOS: DEVELOPED CURRICULA

Design Studio	Curriculum	Status	Curriculum Link (if applicable)
College and Career Readiness	So You Want to Be A... 3.0	Complete and available	https://beyondschoolbells.org/curriculum/college-and-career-readiness.html
Engineering Mindset	CityBuild and Mission2Mars	Complete and available	https://beyondschoolbells.org/curriculum/engineering.html
Environmental	Environmental Education (BioBlitz, Waste, & Solar Energy)	Complete and available	https://beyondschoolbells.org/curriculum/environmental-education.html
ACTivate	College Test Prep	Complete and available	https://beyondschoolbells.org/curriculum/college-and-career-readiness.html
NextEra Wind Energy	Wind Energy	Complete and available	https://beyondschoolbells.org/curriculum/environmental-education.html
Environmental	Tree-a-thon	Complete and available	https://beyondschoolbells.org/curriculum/environmental-education.html
Environmental	Environmental Scavenger Hunt	Complete and available	https://beyondschoolbells.org/curriculum/environmental-education.html
Aviation	Aviation	Complete and available	https://beyondschoolbells.org/curriculum/engineering.html
Engler Entrepreneurship	Entrepreneurship Mindset	Final revisions, available soon	not yet available
Makerspaces	Film Making 101 and STEM Dojo	Under revision	not yet available
Boys Programming	Crash Course: Island Survival	Final revisions, available soon	not yet available
Working with Kids	Professional Development for High School and College Staff	Under revision	not yet available
Civic Nebraska and Lincoln CLCs	Mission-aligned lessons for K-8	Under revision	not yet available